

冠正 缔造完美品质...  
Guanzheng Create Perfect Quality...

# 截止阀系列 >> GLOBE VALVE SERIES



ISO9001认证企业 / 省高新技术企业



E-mail: [valveg@163.com](mailto:valveg@163.com)  
<http://www.valve-gz.com>



直通式截止阀  
Through way type globe valve



Y型截止阀  
Y-type globe valve



角式截止阀  
Angle type globe valve



美标截止阀  
American standard  
globe valve



夹套保温截止阀  
Jacket heat preservation  
globe valve



夹套保温Y型截止阀  
Jacket heat preservation  
Y-type globe valve



波纹管截止阀  
Bellows globe valve



电动截止阀  
Electric actuator globe valve



上展式放料阀  
Upside bleeder valve



下展式放料阀  
Downside bleeder valve



氨用截止阀  
Ammonia globe valve



低温截止阀  
Low temperature globe valve



国内标准截止阀 National standard globe valve  
选用指南 Selection guide

用户应根据本样本所列的产品型号进行选型订货。  
Users shall select needed models to order based on this catalogue.

如对以下各项另有要求或变更，都应在订货合同中加以说明。

- 1、阀门规格(用毫米mm表示);
- 2、公称压力(用MPa单位的10倍值表示);
- 3、法兰连接尺寸及其密封面形式;
- 4、焊接端及其孔径;
- 5、承插口及螺纹端尺寸;
- 6、阀门结构长度;
- 7、需要齿轮传动(包括传动方式及布置方式等);
- 8、需要链轮传动(传动方位及其链条长度等);
- 9、需要电动装置驱动(包括电动装置的型号、特性及其制造商和是否带手动等);
- 10、需要撞击手轮;
- 11、材料(包括阀体、阀杆、紧固件等);
- 12、填料和垫片的要求;
- 13、密封面材料匹配(阀座密封面和阀瓣密封面);
- 14、其它。

If any of the following needs to be changed, it should be specified in the contract.

1. Valve specifications (in mm);
2. Nominal pressure (It is expressed with a value of ten times of real pressure in MPa);
3. Flange connection dimensions and sealing face type;
4. Welding end and bore;
5. Socket and screw part dimensions;
6. Face to face length of valve.
7. Gear actuation required (including actuation type and arrangement mode, etc.);
8. Chain wheel required (driving positions and chain length, etc.);
9. Electric actuator required (including type, characteristics manufacturer of the electric actuator with handwheel or not);
10. Impact handwheel required;
11. Material (including body, stem, tightening part);
12. Packing and gasket requirements;
13. Sealing face material matched (seat sealing face and disc sealing face);
14. Other.

截止阀型号编制方法及说明 Model coding system and illustration of globe valve



冠正阀门企业标志 Corporation logo of GUANZHENG group	1 特殊结构代号 Code of special structure	2 截止阀代号 Code of globe valve	3 传动方式代号 Code of actuation type	4 连接形式代号 Code of connection type	5 结构形式代号 Code of structure type	6 密封面材料代号 Code of sealing face material	7 公称压力值 Code of nominal pressure	8 阀体材料代号 Code of body material
	D-低温阀 Low temperature valve K-抗硫阀 Anti-sulfuric valve W-波纹管阀 Bellow valve J-料浆阀 Mnd valve B-夹套阀 Jacket valve FU-上展式放料阀 Upside bleeder valve FD-下展式放料阀 Downside bleeder valve	J-截止阀 Globe valve L-节流阀 Throttle valve	手动操作省略 Code omitted for manual operation 5-伞齿轮传动 Bevel gear driven 7-液动 Hydraulic actuator 9-电动 Electric actuator	1-内螺纹连接 Female screw connection 2-外螺纹连接 Malescrew connection 4-凸面法兰连接 Raised face flange connection 4j-密封环法兰连接 Seat ring flange connection 4M-凹凸面法兰连接 Male-female flange connection 4G-榫槽面法兰连接 Tongue and groove flange connection 6D-对焊连接 Butt weld connection 6C-承插焊连接 Socket weld joint	1-直通式 Trough way type 4-直角式 Angle type 5-直流式(Y式) Y-globe type(Y-type) 9-压力计用 Manometer 7-平衡角式 Balance angle type	H-Cr13系 不锈钢 Cr13 stainless steel Y-STL 硬质合金 STL hard alloy W-本体材料 Body material B-巴氏合金 Babbitt M-蒙乃尔合金 Monel alloy	用MPa单位的10倍值表示 It is expressed with a value of ten times of real pressure in MPa	C-碳素钢(WCB) Carbon steel P-1Cr18Ni9Ti (P1, P11-铬钼钛耐热钢) Cr-Mo-Ti high temperature steel P11-高镍铬钢 High Ni-Cr steel R-1Cr18Ni12Mo2Ti P8-CF8(304) P3-CF3(304L) R8-CF8M(316) R3-CF3M(316L) I-1Cr5Mo L-LCB C6-WC6 C9-WC9 M-Monel N-CN7M(20#)

注: 1 如法兰密封面采用凸面以外的型式, 则将型号中连接形式代号“4”改为“4j”(环连接面), “4M”(凹凸面)或“4G”(榫槽面)。例如: J4M1H-40。

2 用户对焊接端有要求时, 请在型号中注明, 其中“6C”一承插焊连接, “6D”一对焊连接。

Notes: 1 If flange sealing face adopts other forms instead of raised face, the connection type code "4" should be replaced with "4j"(ring connection face) "4M"(male & female face). or "4G"(tongue & groove face), for example: J4M1H-40.

2 If user has special requirements to welding end, specifications should be indicated in the model. "6C" stands for socket weld connection, "6D" stands for butt weld connection.



性能规范 Property specifications

阀体材料 Body material	碳钢 Carbon steel	不锈钢 Stainless steel		铬钼钢 Cr.Mo.steel	铬钼钛耐热钢 Cr.Mo.Ti.high temperature steel		高镍铬钢 High Ni-Cr steel
		P	R		P <sub>i</sub>	P <sub>n</sub>	
工作温度 Working temperature	≤425℃	≤200℃	≤200℃	≤550℃	≤550℃	≤650℃	≤900℃
适用介质 Suitable media	水、蒸汽、油品 Water, steam, oil goods	硝酸类 Nitric acid	醋酸类 Acetic acid	油品、蒸汽 Oil, steam	石油、石油产品 Petroleum, petroleum products	空气、烟气等 Air, fume etc.	

本样本所列阀门规定的填料和垫片 Packing & gasket for valves of this catalogue

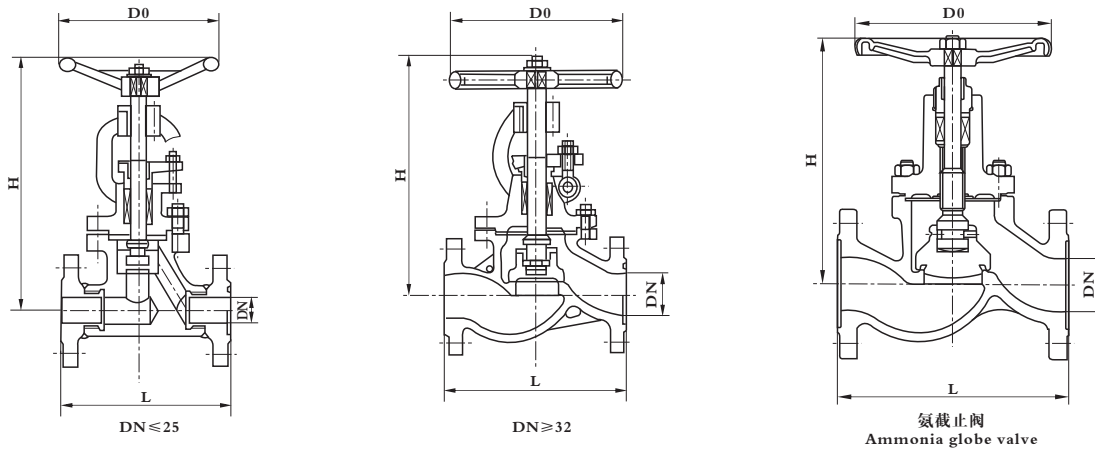
主体材料 Main body material	填料 Packing	垫片 Gasket	
		150Lb或PN1.6MPa	≥300Lb或≥PN2.5MPa
WCB、A105 (内件为Cr13或304) (Trim: Cr13 or 304)	150Lb或PN1.6MPa用油浸石墨石棉绳, ≥300Lb或PN2.5MPa用夹不锈钢丝石墨石棉绳 When pressure class in 150Lb(PN1.6MPa), use oil-immersed graphite asbestos cord, when pressure class is great than or equals 300Lb(PN2.5MPa), use stainless steel thread carried graphite cord.	橡胶石棉板 Rubber asbestos plate	缠绕式304-石棉 Twisted 304-asbestos
WCB、A105 (内件为Monel) (Trim: Monel)	聚四氟乙烯纤维编织 PTFE fiber knitted	缠绕式蒙乃尔合金-聚四氟乙烯 Twisted monel-PTFE	
WC6, F11; WC9, F22	夹蒙乃尔合金丝石墨石棉绳 Monel-thread-carried graphite asbestos cord	橡胶石棉板 Rubber asbestos board	缠绕式: 304-柔性石墨 Twisted 304-soft graphite
CF8, 304; CF8M, 316 CF3, 304L; CF3M, 316L	浸聚四氟乙烯石棉绳 PTFE impregnated asbestos cord	耐蚀橡胶石棉板 Anti-corrosive rubber asbestos board	缠绕式 18-8S, S-聚四氟乙烯 Twisted 18-8S, S-PTFE
MONEL; CN7M	聚四氟乙烯纤维编织 PTFE twisted knitting	缠绕式: 蒙乃尔合金-聚四氟乙烯或平垫片; 聚四氟乙烯 Twisted type: Monel-PTFE or flat gasket; PTFE	

常用材料的抗氧化界限和使用范围 Anti-oxidation ambit & applicative ranges of general materials

材质Material	温度℃ Temperature℃				
	400	500	600	700	800
碳素钢Carbon steel	[Progressive oxidation range bars]				
0.15Mo钢Steel	[Progressive oxidation range bars]				
0.5Mo钢Steel	[Progressive oxidation range bars]				
0.5Cr · 0.5Mo钢Steel	[Progressive oxidation range bars]				
1Cr · 0.3Mo钢Steel	[Progressive oxidation range bars]				
1Cr · 0.5Mo钢Steel	[Progressive oxidation range bars]				
1 1/4Cr · 1/2Mo · 3/4Si钢Steel	[Progressive oxidation range bars]				
2 1/4Cr · 1Mo钢Steel	[Progressive oxidation range bars]				
9Cr · 1Mo钢Steel	[Progressive oxidation range bars]				
18.8不锈钢Stainless steel	[Progressive oxidation range bars]				



法兰连接手动截止阀、节流阀、氨截止阀  
Flange connection manual globe valve and throttle valve, ammonia globe valve



应用规范 Application specifications

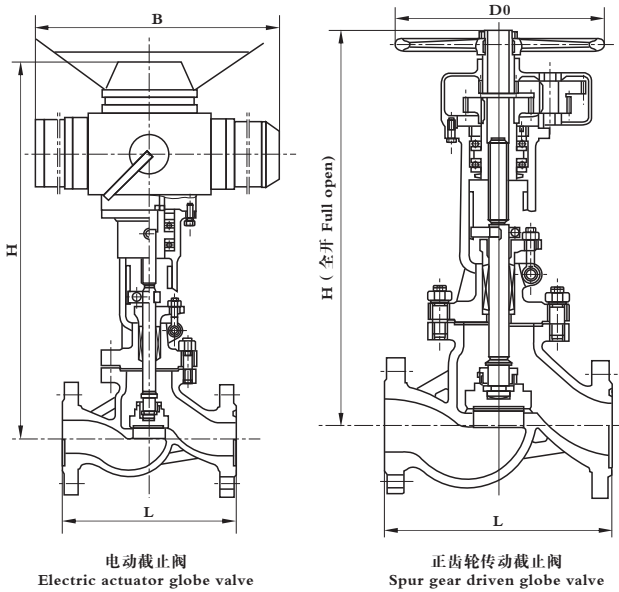
- |   |  |
|---|--|
| 1、设计与制造按 GB/T 12235-1989  | 1. Design and manufacturing according to GB/T 12235-1989                       |
| 2、结构长度按 GB/T 12221-1989   | 2. Face-to-face length according to GB/T 12221-1989                            |
| 3、法兰连接尺寸按 JB/T 79-1994, JB/T 82-1994                            | 3. Flange dimension according to JB/T 79-1994, JB/T 82-1994                    |
| 4、阀门检查和试验按 JB/T 9092-1999                                       | 4. Valve inspection and test according to JB/T 9092-1999                       |
| 5、主体材料: WCB、1Cr5Mo、1Cr18Ni9Ti、1Cr18Ni12Mo2Ti、CF3、CF8、CF3M、CF8M等 | 5. Main body material :1Cr5Mo,1Cr18Ni9Ti, 1Cr18Ni12Mo2Ti,CF3,CF8,CF3M,CF8M etc |

产品型号规格和外形尺寸 Product model, specification & outline dimension

型号 Type	公称压力 Nominal pressure	尺寸 Dimension (mm)																	
		DN	10	15	20	25	32	40	50	65	80	100	125	150	200	250	300	350	400
J <sub>L</sub> 41 <sup>H</sup> <sub>Y</sub> -16C J <sub>L</sub> 41W-16 <sup>P</sup> <sub>R</sub> J <sub>L</sub> 41Y-16I J41B-16C(NH <sub>3</sub> )	1.6MPa	L	130	130	150	160	190	200	230	290	310	350	400	480	600	730	850	980	1100
		H	230	230	275	295	304	354	412	445	480	523	545	613	780	950	1120	1250	1380
		D0	120	120	140	160	160	200	240	280	320	360	400	400	450	450	500	600	600
		W(Kg)	3.5	5	7	9	12	16	24	30	41	56	90	98	170	350	502	560	750
J <sub>L</sub> 41 <sup>H</sup> <sub>Y</sub> -25 J <sub>L</sub> 41W-25 <sup>P</sup> <sub>R</sub> J <sub>L</sub> 41Y-25I J41B-25C(NH <sub>3</sub> )	2.5MPa	L	130	130	150	160	190	200	230	290	310	350	400	480	600	730	850	980	1100
		H	230	230	275	295	304	354	412	445	480	523	545	613	780	950	1120	1250	1380
		D0	120	120	140	160	160	200	240	280	320	360	400	400	450	450	500	600	600
		W(Kg)	4.9	5	7	9	15	17	24	30	42	58	90	98	170	350	502	560	750
J <sub>L</sub> 41 <sup>H</sup> <sub>Y</sub> -40 J <sub>L</sub> 41W-40 <sup>P</sup> <sub>R</sub> J <sub>L</sub> 41Y-40I	4.0MPa	L	130	130	150	160	190	200	230	290	310	350	400	480	600	730	850	980	1100
		H	230	230	275	295	304	354	412	445	480	523	545	690	830	975	1120	1300	1425
		D0	120	120	140	160	160	200	240	280	320	360	400	450	560	640	720	800	900
		W(Kg)	4.9	5	7	9	15	17	24	30	42	58	90	125	173	491	705	930	1234
J <sub>L</sub> 41 <sup>H</sup> <sub>Y</sub> -64 J <sub>L</sub> 41W-64 <sup>P</sup> <sub>R</sub> J <sub>L</sub> 41Y-64I	6.4MPa	L	170	170	190	210	230	260	300	340	380	430	500	550					
		H	230	230	275	295	350	382	428	485	530	660	690	715					
		D0	120	120	140	160	200	240	280	320	360	450	450	450					
		W(Kg)	5.7	6	10	12	19	26	38	56	71	129	143	157					
J <sub>L</sub> 41 <sup>H</sup> <sub>Y</sub> -100 J <sub>L</sub> 41W-100 <sup>P</sup> <sub>R</sub> J <sub>L</sub> 41Y-100I	10.0MPa	L	170	170	190	210	230	260	300	340	380	430	500	550					
		H	230	230	275	295	350	382	428	485	530	660	760	850					
		D0	120	120	140	160	200	240	280	320	360	450	450	450					
		W(Kg)	5.7	6	10	12	19	26	38	56	71	129	200	230					
J <sub>L</sub> 41 <sup>H</sup> <sub>Y</sub> -160 J <sub>L</sub> 41W-160 <sup>P</sup> <sub>R</sub> J <sub>L</sub> 41Y-160I	16.0MPa	L	170	170	190	210	230	260	300	340	380	430							
		H	230	230	275	295	350	382	428	569	604	708							
		D0	120	120	200	200	200	280	320	320	360	450							
		W(Kg)	7.2	7.2	10.2	13.8	20.5	28	45	75	105	165							



法兰连接电动、正齿轮传动截止阀 Flange connection electric actuator and spur gear driven globe valve



应用规范 Application specifications

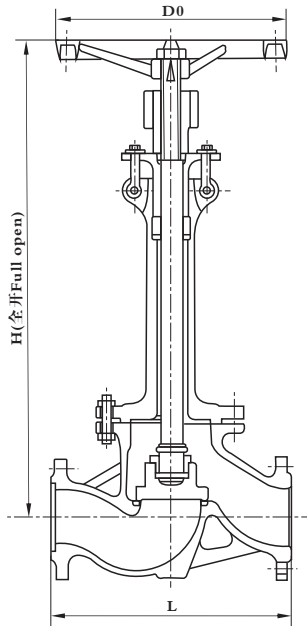
- 1、设计与制造按 GB/T 12235-1989
  - 2、结构长度按 GB/T 12221-1989
  - 3、法兰连接尺寸按 JB/T 79-1994
  - 4、阀门检查和试验按 JB/T 9092-1999
  - 5、主体材料: WCB、1Cr5Mo、1Cr18Ni9Ti、1Cr18Ni12Mo2Ti、CF3、CF8、CF3M、CF8M等
1. Design and manufacturing according to GB/T 12235-1989
  2. Face-to-face length according to GB/T 12221-1989
  3. Flange dimension according to JB/T 79-1994
  4. Valve inspection and test according to JB/T 9092-1999
  5. Main body material :1Cr5Mo、1Cr18Ni9Ti、1Cr18Ni12Mo2Ti,CF3,CF8,CF3M,CF8M etc

产品型号规格和外形尺寸 Product model,specification & outline dimension

型号 Type	公称压力 Nominal pressure	尺寸 Dimension (mm)							
		DN	50	65	80	100	125	150	200
J941 <sup>H</sup> <sub>Y</sub> -16C J941W-16 <sup>P</sup> <sub>R</sub> J941Y-16I	1.6MPa	L	230	290	310	350	400	480	600
		H	664	697	746	770	865	1064	1160
		B	516	516	680	860	860	860	860
		W(Kg)	56	68	75	140	200	260	370
J941 <sup>H</sup> <sub>Y</sub> -25 J941W-25 <sup>P</sup> <sub>R</sub> J941Y-25I	2.5MPa	L	230	290	310	350	400	480	600
		H	664	697	746	770	865	1064	1160
		B	516	516	680	860	860	860	860
		W(Kg)	60	75	88	150	220	280	400
J941 <sup>H</sup> <sub>Y</sub> -40 J941W-40 <sup>P</sup> <sub>R</sub> J941Y-40I	4.0MPa	L	230	290	310	350	400	480	600
		H	664	697	746	770	865	1064	1160
		B	516	516	680	860	860	860	860
		W(Kg)	75	90	100	170	240	310	420
J941 <sup>H</sup> <sub>Y</sub> -64 J941W-64 <sup>P</sup> <sub>R</sub> J941Y-64I	6.4MPa	L	300	340	380	430	-	-	-
		H	715	760	905	975	-	-	-
		B	680	680	720	720	-	-	-
		W(Kg)	60	90	105	163	-	-	-
J941 <sup>H</sup> <sub>Y</sub> -100 J941W-100 <sup>P</sup> <sub>R</sub> J941Y-100I	10.0MPa	L	300	340	380	430	-	-	-
		H	715	760	905	975	-	-	-
		B	680	680	720	720	-	-	-
		W(Kg)	62	92	130	175	-	-	-
J441 <sup>H</sup> <sub>Y</sub> -100 J441W-100 <sup>P</sup> <sub>R</sub> J441Y-100I	10.0MPa	L	300	340	380	430	500	550	-
		H	550	650	697	770	880	980	-
		D0	280	320	400	400	450	450	-
		W(Kg)	75	90	103	162	240	270	-



低温截止阀、节流阀 Low temperature globe valve and throttle valve



应用规范 Application specifications

- 1、设计与制造按 JB/T 7749-1995
- 2、结构长度按 GB/T 12221-1989
- 3、法兰连接尺寸按 JB/T 79-1994
- 4、阀门检验和试验按 JB/T 9092-1999
- 5、主体材料：LCB、LF1、LC3、LF3、CF8、F304等

1. Design and manufacturing according to JB/T 7749-1995
2. Face-to-face length according to GB/T 12221-1989
3. Flange dimension according to JB/T 79-1994
4. Valve inspection and test according to JB/T 9092-1999
5. Main body material :LCB,LF1,LC3,LF3,CF8,F304 etc

性能规范 Property specification

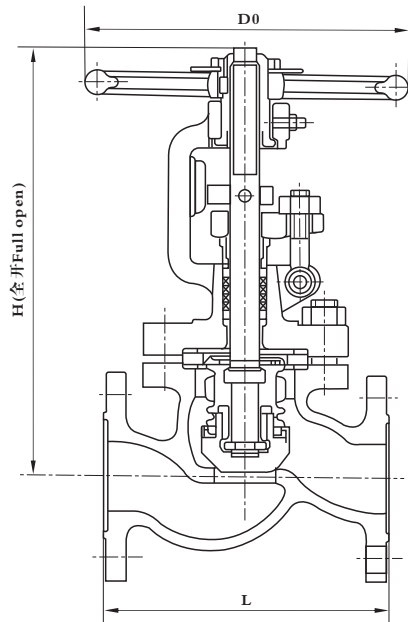
阀体材料 Body material	工作温度 Working temperature	适用介质 Suitable media
LCB、LF1	-46℃	氨、液氨、丙烷 Ammonia, liquid ammonia, propane
LC3、LF3	-101℃	乙烯、二氧化碳 Ethene, CO <sub>2</sub>
CF8、F304	-196℃	甲烷、液化天然气 Methane, liquefied natural gas

产品型号规格和外形尺寸 Product model, specification & outline dimension

型号 Type	公称压力 Nominal pressure	尺寸 Dimension (mm)												
		DN	10	15	20	25	32	40	50	65	80	100	150	200
D <sub>L</sub> <sup>J</sup> 41Y-16L D <sub>L</sub> <sup>J</sup> 41Y-16P <sub>s</sub>	1.6MPa	L	130	130	150	160	190	200	230	290	310	350	480	600
		H	320	326	350	412	420	471	500	550	590	652	820	920
		D0	120	120	160	160	160	200	240	240	320	320	360	400
		W(Kg)	4	5	10	11	12	20	29	32	46	58	101	190
D <sub>L</sub> <sup>J</sup> 41Y-25L D <sub>L</sub> <sup>J</sup> 41Y-25P <sub>s</sub>	2.5MPa	L	130	130	150	160	190	200	230	290	310	350	480	600
		H	340	344	360	432	440	490	520	570	620	682	850	950
		D0	120	120	160	160	160	200	240	280	320	360	400	400
		W(Kg)	5	6	10	11	12	21	30	32	50	60	125	194
D <sub>L</sub> <sup>J</sup> 41Y-40L D <sub>L</sub> <sup>J</sup> 41Y-40P <sub>s</sub>	4.0MPa	L	130	130	150	160	190	200	230	290	310	350	480	600
		H	340	344	360	432	440	490	520	570	620	682	860	952
		D0	120	120	160	160	160	200	240	280	320	360	400	400
		W(Kg)	5	6	10	11	12	21	30	32	50	60	134	195



波纹管截止阀 Bellows globe valve



应用规范 Application specifications

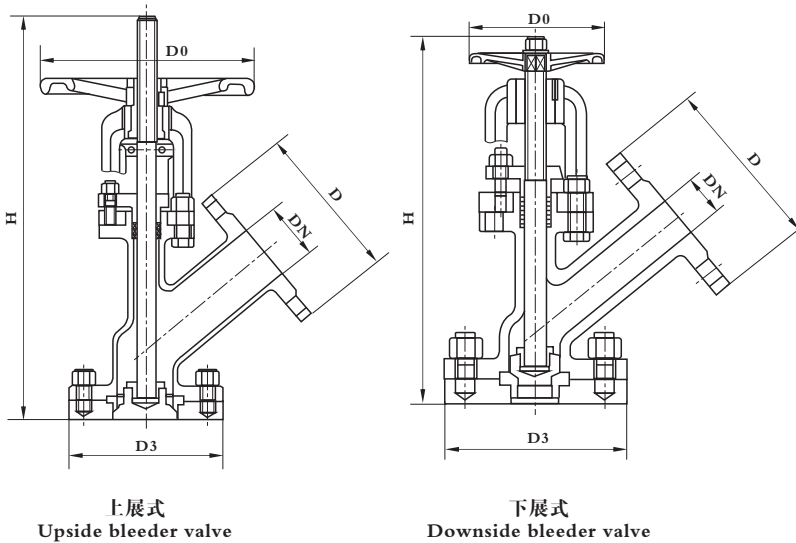
- 1、设计与制造按 GB/T 12235-1989
  - 2、结构长度按 GB/T 12221-1989
  - 3、法兰连接尺寸按 JB/T 79-1994
  - 4、阀门检验和试验按 JB/T 9092-1999
  - 5、主体材料：碳钢、1Cr18Ni9Ti
- 
1. Design and manufacturing according to GB/T 12235-1989
  2. Face-to-face length according to GB/T 12221-1989
  3. Flange dimension according to JB/T 79-1994
  4. Valve inspection and test according to JB/T 9092-1999
  5. Main body material :Carbon steel,1Cr18Ni9Ti

产品型号规格和外形尺寸 Product model,specification & outline dimension

型号 Type	公称压力 Nominal pressure	尺寸 Dimension (mm)													
		DN	10	15	20	25	32	40	50	65	80	100	125	150	200
XD · WJ41H-16C  XD · WJ41W-16P	1.6MPa	L	130	130	150	160	190	200	230	290	310	350	400	480	600
		H	230	230	275	295	304	354	412	445	480	523	545	613	780
		D0	120	120	140	160	160	200	240	280	320	360	400	400	450
		W(Kg)	3.5	5	7	9	12	16	24	30	41	56	90	98	170
XD · WJ41H-25  XD · WJ41W-25P	2.5MPa	L	130	130	150	160	190	200	230	290	310	350	400	480	600
		H	230	230	275	295	304	354	412	445	480	523	545	613	780
		D0	120	120	140	160	160	200	240	280	320	360	400	400	450
		W(Kg)	4.9	5	7	9	15	17	24	30	42	58	90	98	170
XD · WJ41H-40  XD · WJ41W-40P	4.0MPa	L	130	130	150	160	190	200	230	290	310	350			
		H	230	230	275	295	304	354	412	445	480	523			
		D0	120	120	140	160	160	200	240	280	320	360			
		W(Kg)	5.3	6	8	10	17	19	27	33	45	62			



上、下展式放料阀 Upside & downside bleeder valve



应用规范 Application specifications

- 1、设计与制造按 HG5-10-81
  - 2、法兰连接尺寸按 JB79
  - 3、阀门检验和试验按 JB/T 9092-1999
  - 4、主体材料：铸钢、1Cr18Ni9Ti
- 
1. Design and manufacturing according to HG5-10-81
  2. Flange dimension according to JB79
  3. Valve inspection and test according to JB/T 9092-1999
  4. Main body material :Cast steel,1Cr18Ni9Ti

性能规范 Property specification

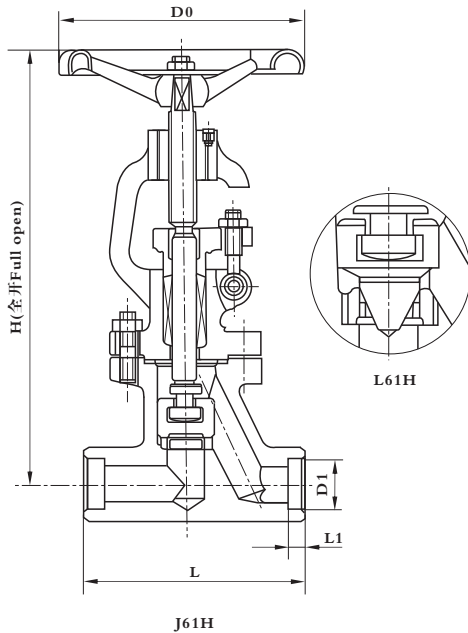
压力 (Mpa) Pressure				工作温度 Working temperature	适用介质 Suitable medium
公称压力 Nominal pressure	1.6	上密封试验 Back seat test	1.76	≤175℃	水、颗粒、油品等 Water, graunle, oil etc
壳体试验 Body test	2.4	高压密封试验 High pressure sealing test	1.76		

产品型号规格和外形尺寸 Product model, specification & outline dimension

型号 Type	公称压力 Nominal pressure	尺寸 Dimension (mm)								
		上展式 Upside bleeder valve				下展式 Downside bleeder valve				
		DN	D	D3	H	D0	D	D3	H	D0
FuJ45H-16C	1.6MPa	25	115	115	270	160	115	135	225	160
		32	135	135	285	160	135	145	300	160
		40	145	145	355	180	145	160	340	180
FdJ45H-16C		50	160	160	370	180	160	180	345	180
FuJ45W-16P		65	180	180	465	220	180	195	425	220
		80	195	195	480	250	195	215	445	250
FdJ45W-16P		100	215	215	590	280	215	260	535	280
		125	245	245	730	300	245	280	585	300
	150	280	280	775	320	280	330	665	320	



承插焊截止阀、节流阀 Socket welded globe valve and throttle valve



应用规范 Application specifications

- 1、设计与制造按 JB/T 7746-1995
- 2、承插焊连接的端部尺寸按 JB/T 1751-1992
- 3、阀门检验和试验按 JB/T 9092-1999
- 4、主体材料：碳钢、1Cr18Ni9Ti、1Cr18Ni12Mo2Ti、F304、F316、F304L、F316L

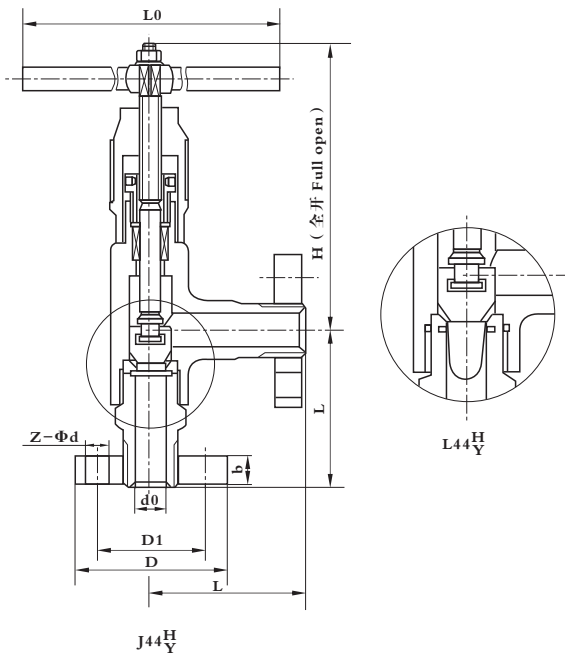
1. Design and manufacturing according to JB/T 7746-1995
2. Socket butted dimension according to JB/T 1751-1992
3. Valve inspection and test according to JB/T 9092-1999
4. Main body material :Carbon steel,1Cr18Ni9Ti, 1Cr18Ni12Mo2Ti,F304,F316,F304L,F316L

产品型号规格和外形尺寸 Product model,specification & outline dimension

型号 Type	公称压力 Nominal pressure	尺寸 Dimension (mm)							
		DN	10	15	20	25	32	40	50
J <sub>L</sub> 6c1 <sup>H</sup> <sub>Y</sub> -25 J <sub>L</sub> 6c1W-25 <sup>P</sup> <sub>R</sub> J <sub>L</sub> 6c1Y-25I	2.5MPa	L	100	110	130	140	160	180	200
		H	220	230	275	295	302	355	355
		D1	18.4	22.5	28.5	34.5	43.0	49.0	61.1
		L1	10	10	11	12	14	15	16
		D0	120	120	140	160	160	160	180
		W(Kg)	3.2	3.3	4.8	6	7	12	18
J <sub>L</sub> 6c1 <sup>H</sup> <sub>Y</sub> -40 J <sub>L</sub> 6c1W-40 <sup>P</sup> <sub>R</sub> J <sub>L</sub> 6c1Y-40I	4.0MPa	L	100	110	130	140	160	180	200
		H	220	230	275	295	302	355	355
		D1	18.4	22.5	28.5	34.5	43.0	49.0	61.1
		L1	10	10	11	12	14	15	16
		D0	120	120	140	160	160	160	180
		W(Kg)	3.2	3.3	4.8	6	7	12	18
J <sub>L</sub> 6c1 <sup>H</sup> <sub>Y</sub> -64 J <sub>L</sub> 6c1W-64 <sup>P</sup> <sub>R</sub> J <sub>L</sub> 6c1Y-64I	6.4MPa	L	100	110	130	140	160	180	200
		H	220	230	275	295	302	355	355
		D1	18.4	22.5	28.5	34.5	43.0	49.0	61.14
		L1	10	10	11	12	14	15	16
		D0	120	120	140	160	160	160	180
		W(Kg)	3.2	3.3	4.8	6	8	14	20
J <sub>L</sub> 6c1 <sup>H</sup> <sub>Y</sub> -100 J <sub>L</sub> 6c1W-100 <sup>P</sup> <sub>R</sub> J <sub>L</sub> 6c1Y-100I	10.0MPa	L	100	110	130	140	160	180	200
		H	220	230	275	295	302	355	355
		D1	18.4	22.5	28.5	34.5	43.0	49.0	61.1
		L1	10	10	11	12	14	15	16
		D0	120	120	140	160	160	160	180
		W(Kg)	3.2	3.3	4.8	6	8	14	20
J <sub>L</sub> 6c1 <sup>H</sup> <sub>Y</sub> -160 J <sub>L</sub> 6c1W-160 <sup>P</sup> <sub>R</sub> J <sub>L</sub> 6c1Y-160I	16.0MPa	L	100	110	130	140			
		H	220	230	275	295			
		D1	18.4	22.5	28.5	34.5			
		L1	10	10	11	12			
		D0	120	120	140	160			
		W(Kg)	5	6	8	10			



角式截止阀、节流阀 Angle type globe valve and throttle valve



应用规范 Application specifications

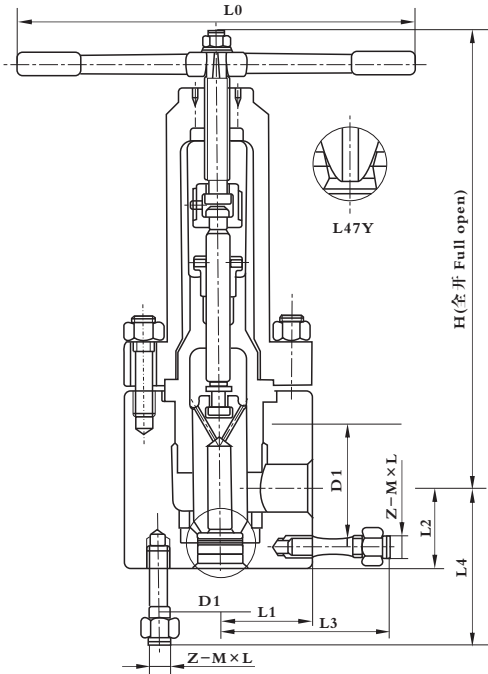
- 1、设计与制造按 JB/T 7746-1995
  - 2、阀门检验和试验按 JB/T 9092-1999
  - 3、主体材料：碳钢、1Cr18Ni9Ti、1Cr18Ni12Mo2Ti、00Cr17Ni14Mo2、304、F316、F304L、F316L
1. Design and manufacturing according to JB/T 7746-1995
  2. Valve inspection and test according to JB/T 9092-1999
  3. Main body material :Carbon steel,1Cr18Ni9Ti, 1Cr18Ni12Mo2Ti,00Cr17Ni14Mo2,304,F316, F304L,F316L

产品型号规格和外形尺寸 Product model,specification & outline dimension

型号 Type	公称压力 Nominal pressure	尺寸 Dimension (mm)										
		DN	10	15	25	32	40	50	65	80	100	125
J <sub>L</sub> 44 <sup>H</sup> <sub>Y</sub> -160 J <sub>L</sub> 44 <sup>W</sup> <sub>Y</sub> -160 <sup>P</sup> <sub>R</sub> J <sub>L</sub> 44 <sup>H</sup> <sub>Y</sub> -220 J <sub>L</sub> 44 <sup>W</sup> <sub>Y</sub> -220 <sup>P</sup> <sub>R</sub>	16.0MPa 22.0MPa	d0	11	15	23	29	39	50	65	75	95	115
		L	90	105	120	135	165	190	215	260	290	320
		D	95	95	105	115	165	165	200	225	260	300
		D1	60	60	68	80	115	115	145	175	195	235
		Z-Φd	3-Φ18	3-Φ18	3-Φ18	4-Φ18	6-Φ26	6-Φ26	6-Φ29	6-Φ33	6-Φ36	8-Φ39
		b	20	20	20	22	28	32	40	50	60	75
		L0	200	200	300	300	350	400	650	720	850	1000
J <sub>L</sub> 44 <sup>H</sup> <sub>Y</sub> -250 J <sub>L</sub> 44 <sup>W</sup> <sub>Y</sub> -250 <sup>P</sup> <sub>R</sub> J <sub>L</sub> 44 <sup>H</sup> <sub>Y</sub> -320 J <sub>L</sub> 44 <sup>W</sup> <sub>Y</sub> -320 <sup>P</sup> <sub>R</sub>	25.0MPa 32.0MPa	d0	11	17	23	29	42	53	68	75	95	115
		L	90	105	120	135	165	195	215	260	290	320
		D	95	105	115	135	165	200	225	260	300	330
		D1	60	68	80	95	115	145	170	195	235	255
		Z-Φd	3-Φ18	3-Φ18	4-Φ18	4-Φ22	6-Φ26	6-Φ29	6-Φ33	6-Φ36	8-Φ39	8-Φ42
		b	20	20	22	25	32	40	50	60	75	78
		L0	200	200	300	300	350	400	650	850	850	1000
W(Kg)	5	5	9.2	10.5	21	30	90	132	171	317		
	5.5	6	10.5	12	23	35	180	154	190	320		



平衡角式截止阀、节流阀 Balance angle type globe valve and throttle valve



应用规范 Application specifications

- 1、设计与制造按 JB/T 7746-1995
- 2、阀门检验和试验按 JB/T 9092-1999
- 3、主体材料：优质碳钢、铬镍钼钛钢

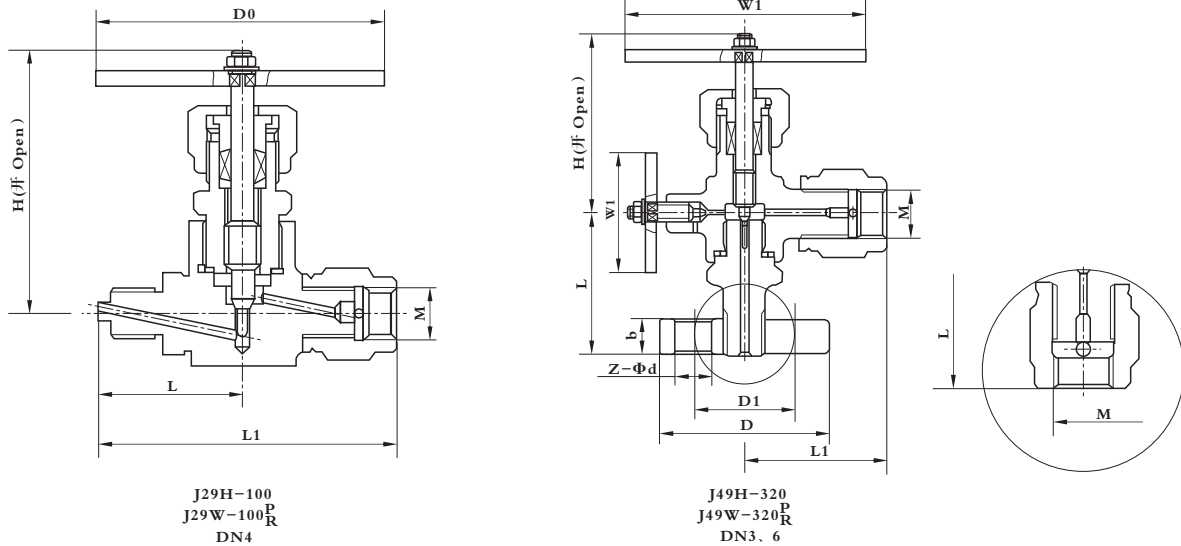
1. Design and manufacturing according to JB/T 7746-1995
2. Valve inspection and test according to JB/T 9092-1999
3. Main body material :High quality carbon steel,  
Cr-Ni-Mo-Ti steel

产品型号规格和外形尺寸 Product model, specification & outline dimension

型号 Type	公称压力 Nominal pressure	尺寸 Dimension (mm)													
		DN	D0	D1	D2	L3	L	L1	L2	Z-M×L	L0	d	H	H1	W(Kg)
J <sub>L</sub> 47Y-160 J <sub>L</sub> 47Y-160R	16.0MPa	65	65	145	74	207	236	115	210	6-M27×140	360	65	504	535	142.8
		80	80	170	94	235	260	130	235	6-M30×160	360	80	521	563	185.2
		100	99	195	115	-	300	150	275	6-M33	640	93	700	742	336
		125	123	235	146	-	380	190	340	8-M36	800	112	780	832	598
J <sub>L</sub> 47Y-320 J <sub>L</sub> 47Y-320R	32.0MPa	50	53	145	70	192	240	100	212	6-M27×140	360	50	440	476	135.7
		65	68	170	90	220	260	115	235	6-M30×160	360	65	504	535	177.1
		80	85	195	112	251	300	130	271	6-M33×180	360	80	521	563	244.6
		100	103	235	130	-	320	160	310	8-M36	640	93	700	742	381
		125	120	255	155	-	400	190	360	8-M39	800	112	780	832	700
		150	149	315	193	-	450	225	405	8-M45	-	135	-	-	-
		200	193	380	243	-	500	250	500	8-M56	-	174	-	-	-



压力计截止阀 Manometer globe valve



应用规范 Application specifications

- |   |   |
|---|---|
| <ol style="list-style-type: none"> <li>1、设计与制造按 JB/T 7746-1995</li> <li>2、阀门检验和试验按 JB/T 9092-1999</li> <li>3、主体材料：碳钢、1Cr18Ni9Ti、1Cr18Ni12Mo2Ti、00Cr17Ni14Mo2Ti、F304、F316、F304L、F316L</li> </ol> | <ol style="list-style-type: none"> <li>1. Design and manufacturing according to JB/T 7746-1995</li> <li>2. Valve inspection and test according to JB/T 9092-1999</li> <li>3. Main body material :Carbon steel,1Cr18Ni9Ti, 1Cr18Ni12Mo2Ti,00Cr17Ni14Mo2Ti,F304,F316,F304L,F316L</li> </ol> |
|---|---|

产品型号规格和外形尺寸 Product model,specification & outline dimension

型号 Type	公称压力 Nominal pressure	尺寸 Dimension (mm)					
		DN	L	L1	M	H	D0
J29H-100 J29W-100 <sup>P</sup> / <sub>R</sub>	10.0MPa	4	113	55	M20×1.5	112	110

产品型号规格和外形尺寸 Product model,specification & outline dimension

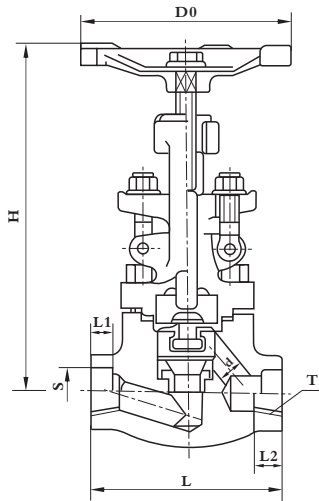
型号 Type	公称压力 Nominal pressure	尺寸 Dimension (mm)										
		DN	L	L1	D	D1	b	Z-Φd	M	H	W1	W2
J49H-320 J49W-320 <sup>P</sup> / <sub>R</sub>	32.0MPa	3	60	58	70	42	15	3-Φ16	M20×1.5	82	110	50
		6	60	58	70	42	15	3-Φ16	M20×1.5	82	110	50

产品型号规格和外形尺寸 Product model,specification & outline dimension

型号 Type	公称压力 Nominal pressure	尺寸 Dimension (mm)							
		DN	L	L1	M	H	W1	W2	
J29H-320 J29W-320 <sup>P</sup> / <sub>R</sub>	32.0MPa	3	68	58	M20×1.5	82	110	50	
		6	68	58	M20×1.5	82	110	50	



锻钢截止阀 Forged steel globe valve



应用规范 Application specifications

- 1、设计与制造按 JB/T 7746-1995
- 2、阀门检验和试验按 JB/T 9092-1999
- 3、主体材料：碳钢

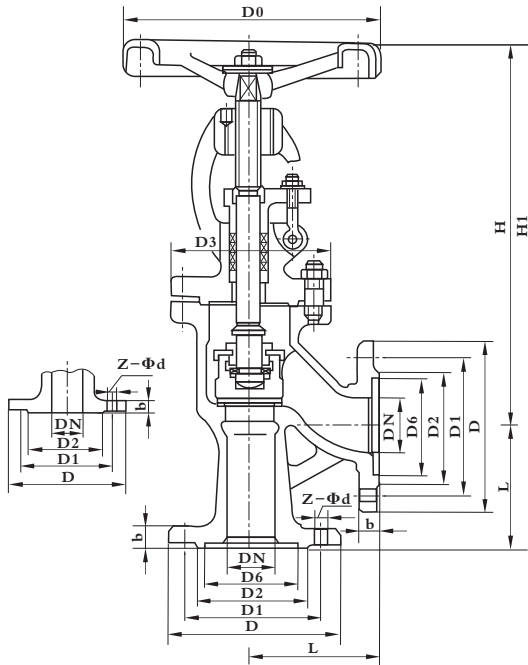
1. Design and manufacturing according to JB/T 7746-1995
2. Valve inspection and test according to JB/T 9092-1999
3. Main body material :Carbon steel

产品型号规格和外形尺寸 Product model,specification & outline dimension

型号 Type	公称压力 Nominal pressure	尺 寸 Dimension (mm)						
		DN	15	20	25	32	40	50
J11 <sup>H</sup> <sub>Y</sub> -16C J11 <sup>H</sup> <sub>Y</sub> -25 J11 <sup>H</sup> <sub>Y</sub> -40 J6c1 <sup>H</sup> <sub>Y</sub> -16C J6c1 <sup>H</sup> <sub>Y</sub> -25 J6c1 <sup>H</sup> <sub>Y</sub> -40	1.6MPa	L	90	100	120	140	170	200
		S	22.5	28.5	34.5	43	49	61
	2.5MPa	L1	10	11	12	14	15	16
		T	1/2	3/4	1	1 1/4	1 1/2	2
	4.0MPa	L2	15	17	19	21	21	25
		d	13	18	23	29	36	46
	H	159	190	208	216	247	290	
		D0	98	112	126	166	188	220
W(Kg)	3	4	5	7	12	18		
J11 <sup>H</sup> <sub>Y</sub> -64 J11 <sup>H</sup> <sub>Y</sub> -100 J6c1 <sup>H</sup> <sub>Y</sub> -64 J6c1 <sup>H</sup> <sub>Y</sub> -100	6.4MPa	L	90	100	120	140	170	210
		S	22.5	28.5	34.5	43	49	61
	10.0MPa	L1	10	11	12	14	15	16
		T	1/2	3/4	1	1 1/4	1 1/2	2
	H	159	190	208	227	258	405	
		D0	98	112	126	166	188	220
	W(Kg)	3	4	5	8	14	20	
	J11 <sup>H</sup> <sub>Y</sub> -160 J6c1 <sup>H</sup> <sub>Y</sub> -160	16.0MPa	L	90	100	120	140	170
S			22.5	28.5	34.5	43	49	61
H		159	190	208	227	258	405	
		D0	98	112	126	188	220	220
W(Kg)		3	4	5	8	14	20	



角式截止阀 Angle type globe valve



应用规范 Application specifications

- 1、设计与制造按 GB/T 12235-1989
- 2、结构长度按 GB/T 12221-1989
- 3、法兰连接尺寸按 JB/T 79-1994
- 4、阀门检验和试验按 JB/T 9092-1999
- 5、主体材料：铸钢

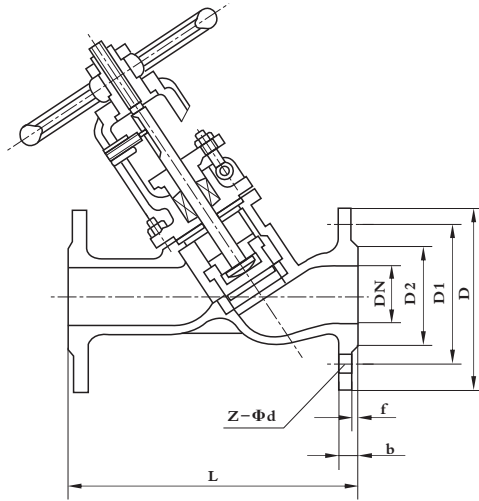
1. Design and manufacturing according to GB/T 12235-1989
2. Face-to-face length according to GB/T 12221-1989
3. Flange dimension according to JB/T 79-1994
4. Valve inspection and test according to JB/T 9092-1999
5. Main body material: Cast steel

产品型号规格和外形尺寸 Product model, specification & outline dimension

型号 Type	公称压力 Nominal pressure	尺 寸 Dimension (mm)											
		DN	L	D	D1	D2	D6	b	Z-Φd	H	H1	D0	W(Kg)
J44H-16C	1.6MPa	50	125	160	125	100	-	20	4-Φ18	350	380	240	21.5
		80	155	195	160	135	-	22	8-Φ18	412	444	280	32
J44H-25	2.5MPa	50	125	160	125	100	88	20	4-Φ18	350	380	240	21.5
J44H-40	4.0MPa	32	105	135	100	78	66	18	4-Φ18	280	308	160	11.5
		40	115	145	110	85	76	18	4-Φ18	330	354	200	15.5
		50	125	160	125	100	88	20	4-Φ18	350	380	240	21.5



直流式截止阀 Y-type globe valve



应用规范 Application specifications

- 1、设计与制造按 GB/T 12235-1989
- 2、结构长度按 GB/T 12221-1989
- 3、法兰连接尺寸按 JB/T 79-1994
- 4、阀门检验和试验按 JB/T 9092-1999
- 5、主体材料: WCB

1. Design and manufacturing according to GB/T 12235-1989
2. Face-to-face length according to GB/T 12221-1989
3. Flange dimension according to JB/T 79-1994
4. Valve inspection and test according to JB/T 9092-1999
5. Main body material: WCB

产品型号规格和外形尺寸 Product model, specification & outline dimension

型号 Type	公称压力 Nominal pressure	尺 寸 Dimension (mm)							
		DN	L	D	D1	D2	b	f	Z-Φd
J45M-16C	1.6MPa	15	130	95	65	47	14	2	4-Φ14
		20	150	105	75	58	14	2	4-Φ14
		25	160	115	85	68	14	2	4-Φ14
		32	180	140	100	78	15	2	4-Φ18
		40	200	150	110	88	16	3	4-Φ18
		50	230	165	125	102	16	3	4-Φ18
		65	290	185	145	122	18	3	4-Φ18
		80	310	200	160	133	20	3	8-Φ18
		100	350	220	180	158	20	3	8-Φ18
		125	400	250	210	184	22	3	8-Φ18
		150	480	285	240	212	24	3	8-Φ23
200	600	340	295	268	26	3	12-Φ23		
J45M-25	2.5MPa	15	130	95	65	47	16	2	4-Φ14
		20	150	105	75	58	16	2	4-Φ14
		25	160	115	85	68	16	2	4-Φ14
		32	180	140	100	78	18	2	4-Φ18
		40	200	150	110	88	18	3	4-Φ18
		50	230	165	125	102	20	3	4-Φ18
		65	290	185	145	122	22	3	8-Φ18
		80	310	200	160	133	22	3	8-Φ18
		100	350	235	190	158	24	3	8-Φ23
		125	400	270	220	184	28	3	8-Φ26
		150	480	300	250	212	30	3	8-Φ26
		200	600	360	310	278	34	3	12-Φ26



国外标准的截止阀 Foreign standard globe valve  
选用指南 Selection guide

用户应根据本样本所列的产品型号进行选型订货。  
Users shall select needed models to order based on this catalogue.

如对以下各项另有要求或变更，都应在订货合同中加以说明。

- 1、阀门规格(用英寸inch表示);
- 2、压力等级(英美制用磅级表示，日本制用K级表示);
- 3、法兰连接尺寸及其密封面形式;
- 4、焊接端及其孔径;
- 5、承插口及螺纹端尺寸;
- 6、阀门结构长度;
- 7、需要齿轮传动(包括传动方式及布置方式等);
- 8、需要链轮传动(传动方位及其链条长度等);
- 9、需要电动装置驱动(包括电动装置的型号、特性及其制造厂商和是否带手动等);
- 10、需要撞击手轮;
- 11、材料(包括阀体、阀杆、紧固件等);
- 12、填料和垫片的要求;
- 13、密封面材料匹配(阀座密封面和阀瓣密封面);
- 14、其它。

If any of the following needs to be changed, it should be specified in the contract.

1. Valve specifications (in inch);
2. Pressure class (Unit in pound of UK or US standard adopted, unit in K of JIS);
3. Flange connection dimensions and sealing face type;
4. Welding end and bore;
5. Socket and screw part dimensions;
6. Face to face length of valve.
7. Gear actuation required (including actuation type and arrangement mode, etc.);
8. Chain wheel required (driving positions and chain length, etc.);
9. Electric actuator required (including type, characteristics manufacturer of the electric actuator with handwheel or not);
10. Impact handwheel required;
11. Material (including body, stem, tightening part);
12. Packing and gasket requirements;
13. Sealing face material matched (seat sealing face and disc sealing face);
14. Other.

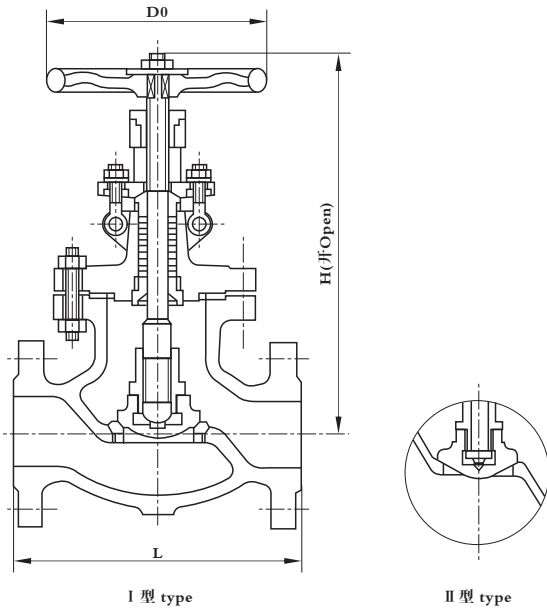
截止阀型号编制方法及说明 Model coding system and illustration of globe valve



冠正阀门企业标志 Corporation logo of GUANZHENG group	1 特殊结构代号 Code of special structure	2 阀门类型代号 Code of valve type	3 结构形式代号 Code of structure type	4 压力等级代号 Code of pressure class	5 连接形式代号 Code of connection type	6 密封副材料代号 Code of sealing face material	7 阀体材料代号 Code of body material	8 传动方式代号 Code of actuation type
	D-低温阀 Low temperature valve K-抗硫阀 Anti-sulfuric valve B-保温阀 Heat-preserving valve DK-真空阀 Vacuum valve	J-直通式截止阀 Through way type globe valve	螺栓连接阀盖、外螺纹连接支架式省略 No code for bolted bonnet external screw yoke type A-角式截止阀 Angle type globe valve Y-Y型截止阀 Y type globe valve N-针型截止阀 Needle globe valve P-自紧密封阀盖截止阀 Pressure seat bonnet globe valve	1-150Lb 3-300Lb 6-600Lb 9-900Lb 15-1500Lb 25-2500Lb 1K-10K 2K-20K	F-RF(凸面法兰 Raised face flange) R-RJ(环密封法兰 Ring seal flange) M-凹凸面法兰 Male-female flange G-榫槽面法兰 Tongue and groove flange W-BW(对焊连接 Butt weld connection) S-SW(承插焊连接 Socket welded connection) T-螺纹连接 Threaded connection U-进口承插焊出口 螺纹连接 Inlet adopts socket weld and outlet end adopts threaded connection	1-Cr13/Cr13 2-STL/STL 3-Cr13/STL 4-Monel/Monel 5-18-8/STL 6-18-8/18-8 7-H.C/H.C 8-20#/20# 9-304/304 10-316/316 11-304L/304L 12-316L/316L 13-18-8/ PTFE 14-Monel/ PTFE 15-20#/PTFE 16-304/PTFE 17-304/STL 18-Cu/Cu	C-WCB(A105) H-WC6(F11) V-WC9(F12) P-CF8(304) R-CF8M(316) S-CF3(304L) L-CF3M(316L) M-Monel N-CN7M(20#)	普通手轮传动省略 Code omitted for general handwheel operation H-撞击手轮式 Impact handwheel Z-正齿轮传动 Spur gear driven S-伞齿轮传动 Bevel gear driven D-电动 Electric actuator



铸钢截止阀 Cast steel globe valves



应用规范 Application specifications

- 1、设计与制造按 BS1873
  - 2、结构长度按 ANSI B16.10、JIS B2002
  - 3、法兰连接尺寸按 ANSI B16.5、JIS B2212~2214
  - 4、阀门检验和试验按 API STD.598
  - 5、主体材料：
    - I 型：WCB、WC6、WC9
    - II 型：CF8、CF8M、CF3、CF3M、CN7M
- 注：I 型指镶阀套阀座  
II 型指本体阀座

1. Design and manufacturing according to BS1873
  2. Face-to-face length according to ANSI B16.10、JIS B2002
  3. Flange dimension according to ANSI B16.5、JIS B2212~2214
  4. Valve inspection and test according to API STD.598
  5. Main body material:
    - I type: WCB,WC6,WC9
    - II type: CF8,CF8M,CF3,CF3M,CN7M
- Notes: I type refer to built-in seat  
II type refer to body seat

尺寸和重量 Dimension & weight

规格 Specification		150Lb、10K				300Lb、20K			
inch	mm	L	H	D0	W(Kg)	L	H	D0	W(Kg)
2	50	203	340	200	24	267	390	200	32
2 1/2	65	216	370	224	34	292	425	250	45
3	80	241	400	250	42	318	450	250	60
4	100	292	470	250	70	356	565	355	100
5	125	356	500	300	83	400	673	450	140
6	150	406	540	355	120	444	710	450	190
8	200	495	645	400	200	559	860	560	310

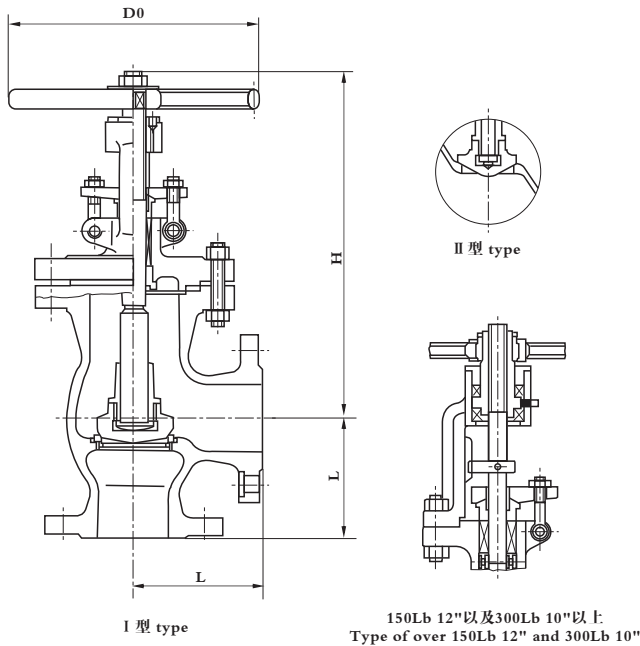


订货号 Ordering guide

主体材料 Body material	压力级 Pressure grade	内件代号 Trim code								
		1	2	3	4	5	6	7	8	9
		Cr13/Cr13	STL/STL	Cr13/STL	Monel/Monel	18-8/STL	18-8/18-8	H.C/H.C	20#/20#	304/304
WCB	150Lb	J1F1C	J1F2C	J1F3C	J1F4C					J1F9C
	300Lb	J3F1C	J3F2C	J3F3C	J3F4C					J3F9C
	10K	J1KF1C	J1KF2C	J1KF3C	J1KF4C					J1KF9C
	20K	J2KF1C	J2KF2C	J2KF3C	J2KF4C					J2KF9C
WC6	150Lb		J1F2H							
	300Lb		J3F2H							
	10K		J1KF2H							
	20K		J2KF2H							
WC9	150Lb		J1F2V							
	300Lb		J3F2V							
	10K		J1KF2V							
	20K		J2KF2V							
CF8	150Lb		J1F2P			J1F5P	J1F6P	J1F7P		
	300Lb		J3F2P			J3F5P	J3F6P	J3F7P		
	10K		J1KF2P			J1KF5P	J1KF6P	J1KF7P		
	20K		J2KF2P			J2KF5P	J2KF6P	J2KF7P		
CF8M	150Lb		J1F2R			J1F5R	J1F6R	J1F7R		
	300Lb		J3F2R			J3F5R	J3F6R	J3F7R		
	10K		J1KF2R			J1KF5R	J1KF6R	J1KF7R		
	20K		J2KF2R			J2KF5R	J2KF6R	J2KF7R		
CF3	150Lb		J1F2S			J1F5S	J1F6S	J1F7S		
	300Lb		J3F2S			J3F5S	J3F6S	J3F7S		
	10K		J1KF2S			J1KF5S	J1KF6S	J1KF7S		
	20K		J2KF2S			J2KF5S	J2KF6S	J2KF7S		
CF3M	150Lb		J1F2L			J1F5L	J1F6L	J1F7L		
	300Lb		J3F2L			J3F5L	J3F6L	J3F7L		
	10K		J1KF2L			J1KF5L	J1KF6L	J1KF7L		
	20K		J2KF2L			J2KF5L	J2KF6L	J2KF7L		
CN7N	150Lb								J1F8N	
	300Lb								J3F8N	
	10K								J1KF8N	
	20K								J2KF8N	



铸钢角式截止阀 Cast steel angle globe valve



应用规范 Application specifications

- 1、设计与制造按 BS 1873
  - 2、结构长度按 ANSI B16.10
  - 3、法兰连接尺寸按 ANSI B16.5
  - 4、阀门检验和试验按 API STD.598
  - 5、主体材料：
    - I 型：WCB、WC6、WC9
    - II 型：CF8、CF8M、CF3、CF3M、CN7M
 注：I 型指镶阀套阀座  
II 型指本体阀座
1. Design and manufacturing according to BS 1873
  2. Face-to-face length according to ANSI B16.10
  3. Flange dimension according to ANSI B16.5
  4. Valve inspection and test according to API STD.598
  5. Main body material:
    - I type: WCB, WC6, WC9
    - II type: CF8, CF8M, CF3, CF3M, CN7M
 Notes: I type refer to built-in seat  
II type refer to body seat

尺寸和重量 Dimension & weight

规格 Specification		150Lb				300Lb			
inch	mm	L	H	D0	W(Kg)	L	H	D0	W(Kg)
2	50	102	373	200	19	133	390	200	32
2 1/2	65	108	390	200	34	146	425	250	45
3	80	121	421	250	38	159	450	250	60
4	100	146	515	250	58	178	565	355	100
5	125	178	535	250	71	200	673	450	140
6	150	203	567	355	97	222	710	560	190
8	200	248	645	400	200	279	860	560	310
10	250	311	712	560	302	311	1260	640	429
12	300	349	990	640	400				

订货号 Ordering guide

主体材料 Main body material	压力级 Class (Lb)	内件代号 Trim code					
		1	2	3	4	18	9
		Cr13/Cr13	STL/STL	Cr13/STL	Monel/Monel	Cu/Cu	304/304
WCB	150	JA1F1C	JA1F2C	JA1F3C	JA1F4C	JA1F18C	JA1F9C
	300	JA3F1C	JA3F2C	JA3F3C	JA3F4C	JA3F18C	JA3F9C
WC6	150		JA1F2H				
	300		JA3F2H				
WC9	150		JA1F2V				
	300		JA3F2V				

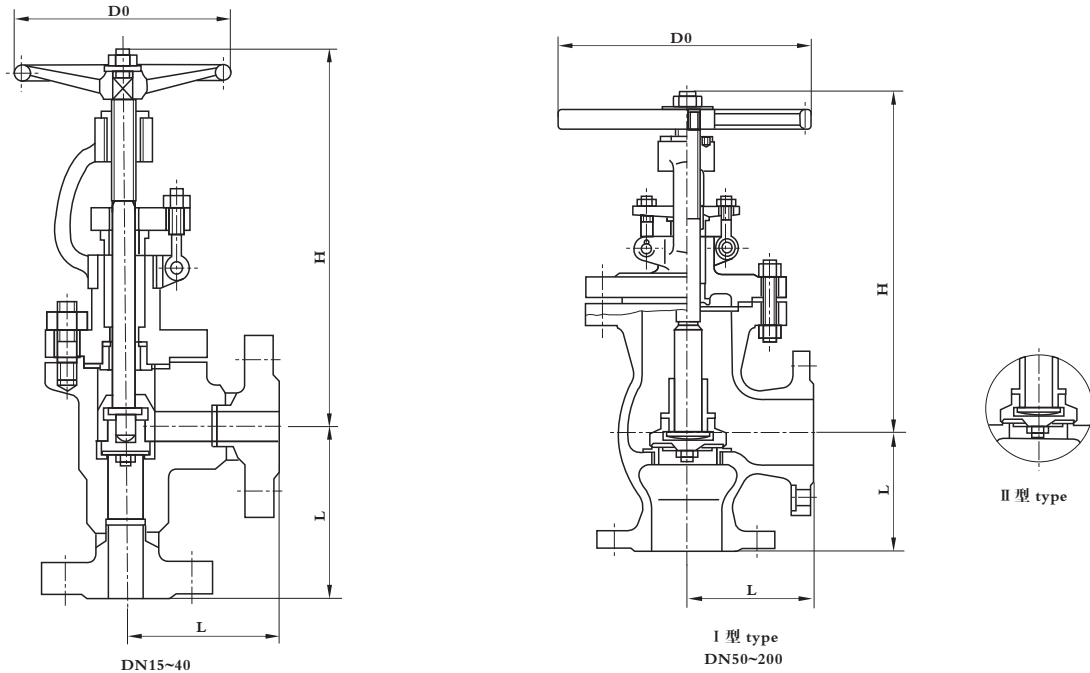
主体材料 Main body material	压力级 Class (Lb)	内件代号 Trim code				
		2	5	6	7	8
		STL/STL	18-8/STL	18-8/18-8	H.C./H.C.	20#/20#
CF8	150	JA1F2P	JA1F5P	JA1F6P	JA1F7P	
	300	JA3F2P	JA3F5P	JA3F6P	JA3F7P	
CF8M	150	JA1F2R	JA1F5R	JA1F6R	JA1F7R	
	300	JA3F2R	JA3F5R	JA3F6R	JA3F7R	
CF3	150	JA1F2S	JA1F5S	JA1F6S	JA1F7S	
	300	JA3F2S	JA3F5S	JA3F6S	JA3F7S	
CF3M	150	JA1F2L	JA1F5L	JA1F6L	JA1F7L	
	300	JA3F2L	JA3F5L	JA3F6L	JA3F7L	
CN7N	150					JA1F8N
	300					JA3F8N

说明：1、主体材料为CN7M的截止阀生产规格2"~4"  
2、内件代号“18”Cu/Cu为青铜/青铜，其阀杆材料亦为青铜

Note: 1. Globe valve specification of body material CN7M: 2"~4"  
2. Cu/Cu of trim code"18" refers to bronze/bronze, the stem material is also bronze



角式软密封截止阀 Angle soft seat globe valve



应用规范 Application specifications

- 1、设计与制造按 BS 1873
- 2、法兰按 ANSI 150、300Lb按ANSI B16.5、JIS 10K按JIS B2212、JIS 20K按 JIS B2214
- 3、阀门的检查和试验按 API STD.598
- 4、主体材料:A105、304、316、304L、316L、20#、WCB、CF8、CF8M、CF3、CF3M、CN7M

注：I 型指镶套阀座 II 型指本体阀座，规格1/2"~1 1/2"仅有本体或本体堆焊阀座

1. Design and manufacturing according to BS 1873
2. Flange according to ANSI 150、300Lb to ANSI B16.5、JIS 10K to JIS B2212、JIS 20K to JIS B2214
3. Valve inspection and test according to API STD.598
4. Main body material: A105,304,316,304L,316L,20#,WCB,CF8,CF8M,CF3,CF3M,CN7M

Notes: I type refers to built-in seat II type refers to body seat, only body seat or body repair weld seat exists for 1/2"~1 1/2"

尺寸和重量 Dimension & weight

mm

规格 Specification		150Lb				300Lb			
inch	mm	L	H	D0	W(Kg)	L	H	D0	W(Kg)
1/2	15	57	230	100	10	76	230	100	10
3/4	20	64	255	125	13	89	255	125	13
1	25	70	275	150	17	102	275	150	17
1 1/2	40	82	360	180	18	114	360	180	18
2	50	102	373	200	19	133	390	200	32
2 1/2	65	108	390	200	34	146	425	250	45
3	80	121	421	250	38	159	450	250	60
4	100	146	515	250	58	178	565	355	100
5	125	178	535	250	71	200	673	450	140
6	150	203	567	355	97	222	710	560	190
8	200	248	645	400	200	279	860	560	310



尺寸和重量 Dimension & weight

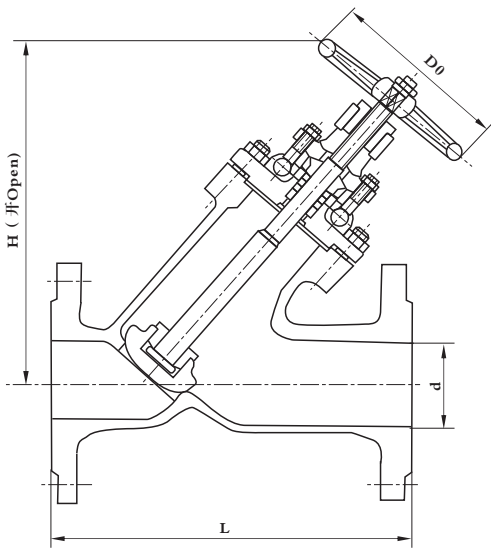
规格 Specification		10K				20K			
inch	mm	L	H	D0	W(Kg)	L	H	D0	W(Kg)
1/2	15	57	230	100	10				
3/4	20	64	255	125	13				
1	25	70	275	150	17				
1 1/2	40	82	360	180	18	114	360	180	18
2	50	102	373	200	19	133	390	200	32
2 1/2	65	108	390	200	34	146	425	250	45
3	80	121	421	250	38	159	450	250	60
4	100	146	515	250	58	178	565	355	100
5	125	178	535	250	71	200	673	450	140
6	150	203	567	355	97	222	710	560	190
8	200	248	645	400	200	279	860	560	310

订货号 Ordering guide

主体材料 Main body material	压力级 Class	内件代号 Trim code		
		13	14	15
		18-8/PTFE	M/PTFE	20#/PTFE
A105 WCB	150Lb	JA1F13C	JA1F14C	
	300Lb	JA3F13C	JA3F14C	
	10K	JA1KF13C	JA1KF14C	
	20K	JA2KF13C	JA2KF14C	
304 CF8	150Lb	JA1F13P		
	300Lb	JA3F13P		
	10K	JA1KF13P		
	20K	JA2KF13P		
316 CF8M	150Lb	JA1F13R		
	300Lb	JA3F13R		
	10K	JA1KF13R		
	20K	JA2KF13R		
304L CF3	150Lb	JA1F13S		
	300Lb	JA3F13S		
	10K	JA1KF13S		
	20K	JA2KF13S		
316L CF3M	150Lb	JA1F13L		
	300Lb	JA3F13L		
	10K	JA1KF13L		
	20K	JA2KF13L		
20# CN7M	150Lb			JA1F15N
	300Lb			JA3F15N
	10K			JA1KF15N
	20K			JA2KF15N



Y型截止阀 Y-type globe valve



应用规范 Application specifications

- 1、设计与制造按 BS 1873
- 2、法兰连接尺寸按 ANSI B16.5、JIS B2212~2214
- 3、阀门的检查和试验按 API STD.598
- 4、主体材料:WCB、WC6、CF9、CF8、CF8M、CF3、CF3M、CN7M

- 1. Design and manufacturing according to BS 1873
- 2. Flange dimension according to ANSI B16.5、JIS B2212~2214
- 3. Valve inspection and test according to API STD.598
- 4. Main body material: WCB,Wc6,CF9,CF8,CF8M,CF3,CF3M,CN7M

尺寸和重量 Dimension & weight

mm

规格 Specification		150Lb 10K				300Lb 20K			
inch	mm	d	L	H	D0	d	L	H	D0
1	25	25	184	240	140	25	203	240	140
1 1/2	40	38	203	310	160	38	229	310	160
2	50	51	229	330	200	51	267	330	200
3	80	76	318	400	250	76	318	400	250
4	100	102	368	440	300	102	356	440	300
6	150	152	470	600	350	152	444	600	350
8	200	203	597	750	400	203	559	750	450

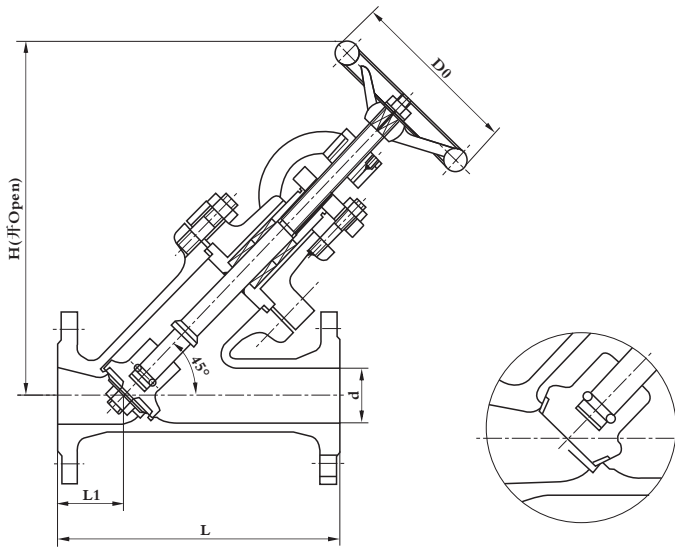


订货号 Ordering guide

主体材料 Body material	压力级 Pressure grade	内件代号 Trim code								
		1	2	3	4	5	6	7	8	9
		Cr13/Cr13	STL/STL	Cr13/STL	Monel/Monel	18-8/STL	18-8/18-8	H.C/H.C	20#/20#	304/304
WCB	150Lb	JY1F1C	JY1F2C	J1F3C	J1F4C					J1F9C
	300Lb	JY3F1C	JY3F2C	J3F3C	J3F4C					J3F9C
	10K	JY1KF1C	JY1KF2C	J1KF3C	J1KF4C					J1KF9C
	20K	JY2KF1C	JY2KF2C	J2KF3C	J2KF4C					J2KF9C
WC6	150Lb		JY1F2H							
	300Lb		JY3F2H							
	10K		JY1KF2H							
	20K		JY2KF2H							
WC9	150Lb		JY1F2V							
	300Lb		JY3F2V							
	10K		JY1KF2V							
	20K		JY2KF2V							
CF8	150Lb		JY1F2P			JY1F5P	JY1F6P	JY1F7P		
	300Lb		JY3F2P			JY3F5P	JY3F6P	JY3F7P		
	10K		JY1KF2P			JY1KF5P	JY1KF6P	JY1KF7P		
	20K		JY2KF2P			JY2KF5P	JY2KF6P	JY2KF7P		
CF8M	150Lb		JY1F2R			JY1F5R	JY1F6R	JY1F7R		
	300Lb		JY3F2R			JY3F5R	JY3F6R	JY3F7R		
	10K		JY1KF2R			JY1KF5R	JY1KF6R	JY1KF7R		
	20K		JY2KF2R			JY2KF5R	JY2KF6R	JY2KF7R		
CF3	150Lb		JY1F2S			JY1F5S	JY1F6S	JY1F7S		
	300Lb		JY3F2S			JY3F5S	JY3F6S	JY3F7S		
	10K		JY1KF2S			JY1KF5S	JY1KF6S	JY1KF7S		
	20K		JY2KF2S			JY2KF5S	JY2KF6S	JY2KF7S		
CF3M	150Lb		JY1F2L			JY1F5L	JY1F6L	JY1F7L		
	300Lb		JY3F2L			JY3F5L	JY3F6L	JY3F7L		
	10K		JY1KF2L			JY1KF5L	JY1KF6L	JY1KF7L		
	20K		JY2KF2L			JY2KF5L	JY2KF6L	JY2KF7L		
CN7N	150Lb								JY1F8N	
	300Lb								JY3F8N	
	10K								JY1KF8N	
	20K								JY2KF8N	



Y型真空截止阀 Y-type vacuum globe valve



应用规范 Application specifications

- 1、法兰连接尺寸按 JIS B2212~2214
- 2、主体材料: WCB、CF8、CF8M、CF3、CF3M
1. Flange dimension according to ANSI B16.5, JIS B2212~2214
2. Main body material: WCB, CF8, CF8M, CF3, CF3M

试验 Test

强度试验 Shell test	水 Water	1.5MPa
	空气 Air	1.1MPa
密封试验 Sealing test	空气 Air	1.1MPa
氦气漏量试验 Helium leakage test	<1.2d × 10 <sup>-6</sup> ACC/S	

注: DN65、80mm 阀瓣与阀杆连接采用旋入螺纹套后点焊  
Notes: Spot welding is adopted for the connection of disc and stem of DN65、80mm valve after screw sleeve is switched in.

尺寸 Dimension

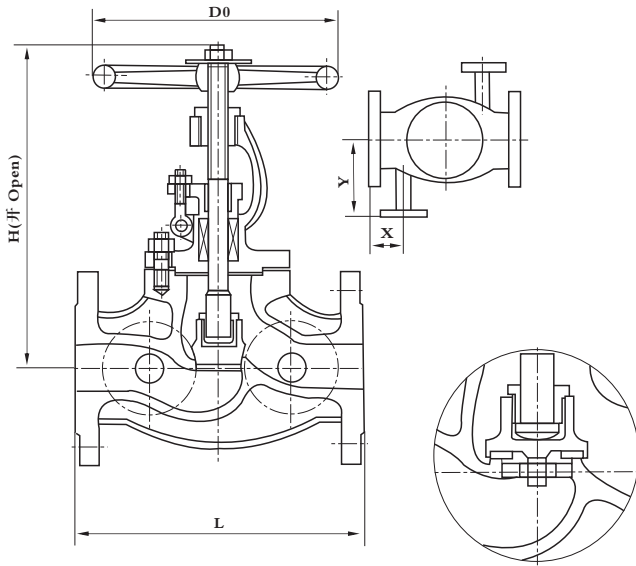
规格 Specification		10K					20K				
inch	mm	d	L	L1	H	D0	d	L	L1	H	D0
3/8	10	10	170	45	210	125	10	170	45	210	125
1/2	15	15	170	45	210	125	15	170	45	210	125
3/4	20	20	200	50	240	140	20	200	50	240	140
1	25	25	200	50	240	140	25	200	50	240	140
1 1/2	40	40	240	50	310	160	40	240	50	310	160
2	50	50	260	60	330	180	50	260	60	330	180
2 1/2	65	65	290	65	355	220					
3	80	80	330	80	400	280					

订货号 Ordering guide

主体材料 Body material	压力级 Pressure grate	内件代号 Trim code			
		5	9	13	16
		18-8/STL	304/304	18-8/PTFE	304/PTFE
WCB	10K	DkY1KF5C	DkY1KF9C	DkY1KF13C	DkY1KF16C
	20K	DkY2KF5C	DkY2KF9C	DkY2KF13C	DkY2KF16C
CF8	10K	DkY1KF5P	DkY1KF9P	DkY1KF13P	DkY1KF16P
	20K	DkY2KF5P	DkY2KF9P	DkY2KF13P	DkY2KF16P
CF8M	10K	DkY1KF5R	DkY1KF9R	DkY1KF13R	DkY1KF16R
	20K	DkY2KF5R	DkY2KF9R	DkY2KF13R	DkY2KF16R
CF3	10K	DkY1KF5S	DkY1KF9S	DkY1KF13S	DkY1KF16S
	20K	DkY2KF5S	DkY2KF9S	DkY2KF13S	DkY2KF16S
CF3M	10K	DkY1KF5L	DkY1KF9L	DkY1KF13L	DkY1KF16L
	20K	DkY2KF5L	DkY2KF9L	DkY2KF13L	DkY2KF16L



K 级夹套铸钢截止阀 K Class jacket cast steel globe valve



应用规范 Application specifications

- 1、设计与制造按 ANSI B16.34, JPI-7S-36
- 2、连接端法兰按 ANSI B16.5, JIS B2212
- 3、结构长度 ANSI B16.10; JIS B2002
- 4、阀门的检查和试验按 API 598, JIS B2003
- 5、主体材料: CF8

1. Design and manufacturing according to ANSI B16.34, JPI-7S-36
2. Connection end: Flange according to ANSI B 16.5, JIS B2212
3. Face-to-face length according to ANSI B16.10, JIS B2002
4. Valve inspecton and test accrdoing to API 598, JIS B2003
5. Main body material:CF8

尺寸和重量 Dimension & weight

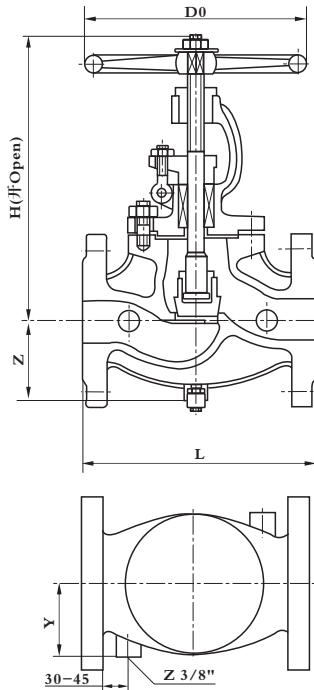
规格 Specification		10K					
inch	mm	L	H	D0	X	Y	W(Kg)
1/2	15	150	240	125	60	110	5.7
3/4	20	150	240	125	60	110	8.1
1	25	190	242	125	60	110	11.0
1 1/2	40	225	286	160	70	120	21.0
2	50	280	286	160	70	120	30
2 1/2	65	300	342	200	70	140	42
3	80	320	345	200	70	140	55
4	100	330	390	250	70	170	70
5	125	400	472	280	70	170	90
6	150	460	528	300	70	200	115

订货号 Ordering guide

主体材料 Main body material	压力级 Pressure grate	内件代号 Trim code	
		16	17
		304/PTFE	304/STL
CF8	10K	BJ1KF16P	BJ1KF17P



磅级夹套铸钢截止阀 Pound class jacket cast steel globe valve



应用规范 Application specifications

- 1、设计与制造按ANSI B16.34
- 2、连接端  
法兰按ANSI B16.5
- 3、结构长度  
ANSI B16.10
- 4、阀门的检查和试验按API 598
- 5、主体材料：CF8、CF8M、CF3、CF3M

1. Design and manufacturing according to ANSI B16.34
2. Connection end  
Flange according to ANSI B16.5
3. Face-to-face length according to ANSI B16.10
4. Valve inspection and test according to API 598
5. Main body material:CF8,CF8M,CF3,CF3M

尺寸和重量 Dimension & weight

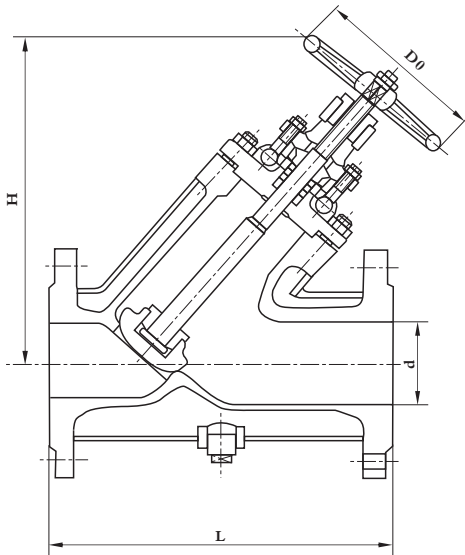
规格 Specification		150Lb						300Lb						600Lb					
inch	mm	L	H	D0	X	Y	W(Kg)	L	H	D0	X	Y	W(Kg)	L	H	D0	X	Y	W(Kg)
1/2	15	150	241	125	60-75	50-65	4	152	241	125	60-75	50-65	4	241	285	160	40-55	55-70	4
3/4	20	150	241	125	60-75	50-65	4.5	178	241	125	60-75	50-65	4.5	241	285	160	40-55	55-70	4.5
1	25	150	242	125	70-85	55-70	6.4	203	283	160	70-85	55-70	6.4	292	313	160	45-60	55-70	6.4
1 1/2	40	190	286	160	75-90	65-80	11.5	229	322	200	75-90	65-80	11.5	330	360	250	60-75	85-100	11.5
2	50	210	286	160	85-100	80-95	21	267	333	200	85-100	80-95	21	356	371	250	85-100	105-120	21
2 1/2	65	240	342	200	95-110	105-120	33	292	395	250	95-110	105-120	33	-	-	-	-	-	-
3	80	280	362	200	95-110	105-120	43.5	318	410	250	95-110	105-120	43.5	-	-	-	-	-	-
4	100	340	420	250	115-130	120-135	66	356	520	300	115-130	120-135	66	-	-	-	-	-	-
6	150	410	528	300	135-150	160-175	114.5	444	648	450	135-150	160-175	114.5	-	-	-	-	-	-

订货号 Ordering guide

主体材料 Main body material	压力级 Pressure grate	内件代号 Trim code			
		2	7	9	17
		STL/STL	H.C/H.C	304/304	304/STL
CF8	150Lb	BJ1F2P	BJ1F7P	BJ1F9P	BJ1F17P
	300Lb	BJ3F2P			BJ3F17P
	600Lb	BJ6F2P			BJ6F17P
CF8M	150Lb	BJ1F2R	BJ1F7R	BJ1F9R	BJ1F17R
	300Lb	BJ3F2R			BJ3F17R
	600Lb	BJ6F2R			BJ6F17R
CF3	150Lb	BJ1F2S	BJ1F7S	BJ1F9S	BJ1F17S
	300Lb	BJ3F2S			BJ3F17S
	600Lb	BJ6F2S			BJ6F17S
CF3M	150Lb	BJ1F2L	BJ1F7L	BJ1F9L	BJ1F17L
	300Lb	BJ3F2L			BJ3F17L
	600Lb	BJ6F2L			BJ6F17L



保温夹套Y型铸钢法兰截止阀 Heat preservation jacket Y-type cast steel flange globe valve



应用规范 Application specifications

- 1、设计与制造按 BS 1873
  - 2、法兰连接尺寸按 ANSI B16.5、JIS B2212~2214
  - 3、阀门检查和试验按 API STD.598
  - 4、主体材料: WCB、CF8、CF8M、CF3、CF3M
1. Design and manufacturing according to BS 1873
  2. Flange dimension according to ANSI B16.5、JIS B2212~2214
  3. Valve inspection and test according to API STD.598
  4. Main body material: WCB, CF8, CF8M, CF3, CF3M

尺寸和重量 Dimension & weight

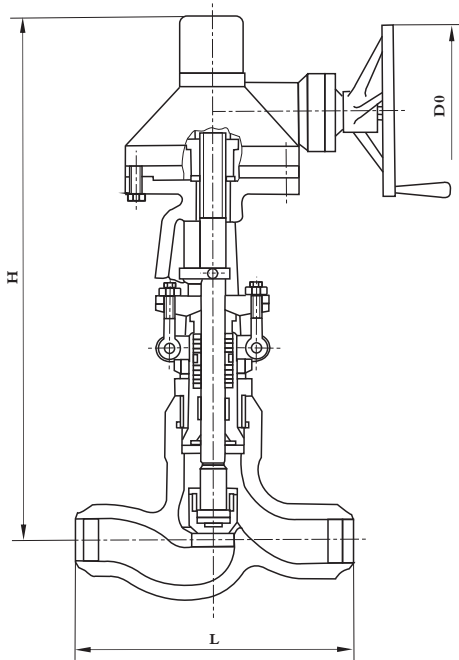
规格 Specification		150Lb 10K				300Lb 20K			
inch	mm	d	L	H	D0	d	L	H	D0
1	25	25	184	240	140	25	203	240	140
1 1/2	40	38	203	310	160	38	229	310	160
2	50	51	229	330	200	51	267	330	200
3	80	76	318	400	250	76	318	400	250
4	100	102	368	440	300	102	356	440	300
6	150	152	470	600	350	152	444	600	350
8	200	203	597	750	400	203	559	750	450

订货号 Ordering guide

主体材料 Main body material	压力级 Pressure grate	内件代号 Trim code			
		2	3	9	10
		STL/STL	Cr13/STL	304/304	316/316
WCB	150Lb	BJY1F2C	BJY1F3C		
	300Lb	BJY3F2C	BJY3F3C		
	10K	BJY1KF2C	BJY1KF3C		
	20K	BJY2KF2C	BJY2KF3C		
CF8	150Lb	BJY1F2P	BJY1F3P		
	300Lb	BJY3F2P	BJY3F3P		
	10K	BJY1KF2P	BJY1KF3P		
	20K	BJY2KF2P	BJY2KF3P		
CF8M	150Lb	BJY1F2R		BJY1F9R	BJY1F10R
	300Lb	BJY3F2R		BJY3F9R	BJY3F10R
	10K	BJY1KF2R		BJY1KF9R	BJY1KF10R
	20K	BJY2KF2R		BJY2KF9R	BJY2KF10R
CF3	150Lb	BJY1F2S		BJY1F9S	BJY1F10S
	300Lb	BJY3F2S		BJY3F9S	BJY3F10S
	10K	BJY1KF2S		BJY1KF9S	BJY1KF10S
	20K	BJY2KF2S		BJY2KF9S	BJY2KF10S
CF3M	150Lb	BJY1F2L		BJY1F9L	BJY1F10L
	300Lb	BJY3F2L		BJY3F9L	BJY3F10L
	10K	BJY1KF2L		BJY1KF9L	BJY1KF10L
	20K	BJY2KF2L		BJY2KF9L	BJY2KF10L



压力自紧密封阀盖的铸钢截止阀 Pressure seat bonnet cast steel globe valve



应用规范 Application specifications

- 1、设计与制造按ANSI B16.34
  - 2、结构长度按ANSI B16.10
  - 3、连接端  
对焊接端按ANSI B16.25
  - 4、阀门的检查和试验按API STD.598
  - 5、主体材料: WCB、WC6、WC9、CF8、CF8M、CF3、CF3M
- 
1. Design and manufacturing according to ANSI B16.34
  2. Face-to-face length according to ANSI B16.10
  3. Connection end  
Butt weld end according to ANSI B16.25
  4. Valve inspection and test according to API STD.598
  5. Main body material: WCB, WC6, WC9, CF8, CF8M, CF3, CF3M

尺寸和重量 Dimension and weight

规格 Specification		900Lb				1500Lb				2500Lb			
inch	mm	L	H	D0	W(Kg)	L	H	D0	W(Kg)	L	H	D0	W(Kg)
2 1/2	65	419	750	560	86	419	750	560	86	508	722	660	95
3	80	381	784	560	95	470	784	600	135	578	753	457	113
4	100	457	1088	457	175	546	1088	457	225	673	1041	600	194
6	150	610	1293	600	365	705	1255	600	440	914	1495	760	680
8	200	737	1715	600	680	832	1660	600	850	1022	1565	760	780

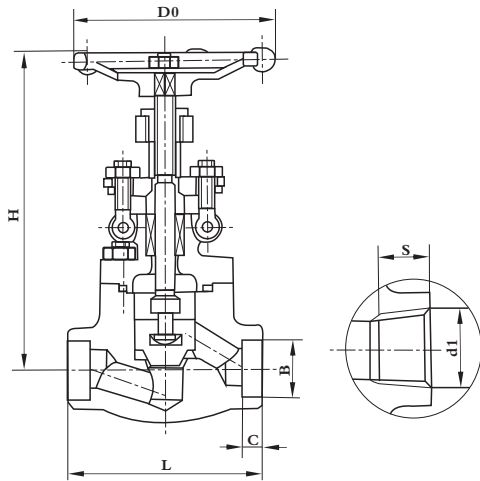


订货号 Ordering guide

主体材料 Main body material	压力级 Class (Lb)	内 件 代 号 Trim code					
		2	5	6	7	4	9
		STL/STL	18-8/STL	18-8/18-8	H.C./H.C.	Monel/Monel	304/304
WCB	900	JP9W2C-S				JP9W4C-S	JP9W9C-S
	1500	JP15W2C-S					
	2500	JP25W2C-S					
WC6	900	JP9W2H-S					
	1500	JP15W2H-S					
	2500	JP25W2H-S					
WC9	900	JP9W2V-S					
	1500	JP15W2V-S					
	2500	JP25W2V-S					
CF8	900	JP9W2P-S	JP9W5P-S	JP9W6P-S	JP9W7P-S		
	1500	JP15W2P-S	JP15W5P-S	JP15W6P-S	JP15W7P-S		
	2500	JP25W2P-S	JP25W5P-S	JP25W6P-S	JP25W7P-S		
CF8M	900	JP9W2R-S	JP9W5R-S	JP9W6R-S	JP9W7R-S		
	1500	JP15W2R-S	JP15W5R-S	JP15W6R-S	JP15W7R-S		
	2500	JP25W2R-S	JP25W5R-S	JP25W6R-S	JP25W7R-S		
CF3	900	JP9W2S-S	JP9W5S-S	JP9W6S-S	JP9W7S-S		
	1500	JP15W2S-S	JP15W5S-S	JP15W6S-S	JP15W7S-S		
	2500	JP25W2S-S	JP25W5S-S	JP25W6S-S	JP25W7S-S		
CF3M	900	JP9W2L-S	JP9W5L-S	JP9W6L-S	JP9W7L-S		
	1500	JP15W2L-S	JP15W5L-S	JP15W6L-S	JP15W7L-S		
	2500	JP25W2L-S	JP25W5L-S	JP25W6L-S	JP25W7L-S		



锻钢截止阀 Forged steel globe valve



应用规范 Application specifications

- 1、设计与制造按 BS 5352
  - 2、连接端  
承插口尺寸按ANSI B16.11  
螺纹端按ANSI B2.1
  - 3、阀门检查和试验按API STD.598
  - 4、主体材料: A105、F11、F22、304、316、304L、316L、20#、Monel
1. Design and manufacturing according to BS5352
  2. Connection end  
Socket dimension according to ANSI B16.11  
Screw part according to ANSI B2.1
  3. Valve inspection and test according to API STD.598
  4. Main body material:A105,F11,F22,304,316,304L,316L,20#,Monel

尺寸和重量 Dimension & weight

mm

规格 Specification		150~800Lb							W (Kg)
mm	inch	H	D0	L	B	C	S	d1	
15	1/2	163	100	79	21.8	9.6	13.6	NPT1/2	2.2
20	3/4	163	100	92	27.1	12.7	13.9	NPT3/4	2.4
25	1	201	125	111	33.8	12.7	17.3	NPT1	4.4
40	1 1/2	246	160	152	48.7	12.7	18.4	NPT1 1/2	7.2
50	2	283	180	171	61.1	15.9	19.2	NPT2	11.5

订货号 Ordering guide

主体材料 Main body material	压力级 Class (Lb)	内 件 代 号 Trim code							
		2	3	4	5	6	7	8	9
		STL/STL	Cr13/STL	Monel/Monel	18-8/STL	18-8/18-8	H.C./H.C.	20号合金/20号合金	304/304
A105	150	J1S2C	J1S3C	J1S4C					J1S9C
	300	J3S2C	J3S3C	J3S4C					J3S9C
	600	J6S2C	J6S3C	J6S4C					J6S9C
	800	J8S2C	J8S3C	J8S4C					J8S9C
F11	150	J1S2H							
	300	J3S2H							
	600	J6S2H							
	800	J8S2H							
F22	150	J1S2V							
	300	J3S2V							
	600	J6S2V							
	800	J8S2V							
304	150	J1S2P			J1S5P	J1S6P	J1S7P		
	300	J3S2P			J3S5P	J3S6P	J3S7P		
	600	J6S2P			J6S5P	J6S6P	J6S7P		
	800	J8S2P			J8S5P	J8S6P	J8S7P		
316	150	J1S2R			J1S5R	J1S6R	J1S7R		
	300	J3S2R			J3S5R	J3S6R	J3S7R		
	600	J6S2R			J6S5R	J6S6R	J6S7R		
	800	J8S2R			J8S5R	J8S6R	J8S7R		
304L	150	J1S2S			J1S5S	J1S6S	J1S7S		
	300	J3S2S			J3S5S	J3S6S	J3S7S		
	600	J6S2S			J6S5S	J6S6S	J6S7S		
	800	J8S2S			J8S5S	J8S6S	J8S7S		
316L	150	J1S2L			J1S5L	J1S6L	J1S7L		
	300	J3S2L			J3S5L	J3S6L	J3S7L		
	600	J6S2L			J6S5L	J6S6L	J6S7L		
	800	J8S2L			J8S5L	J8S6L	J8S7L		
20号合金 20# alloy	150							J1S8N	
	300							J3S8N	
	600							J6S8N	
	800							J8S8N	
Monel	150			J1S4M					
	300			J3S4M					
	600			J6S4M					
	800			J8S4M					

说明: 1、如采用螺纹连接, 连接单元“S”项用“T”表示

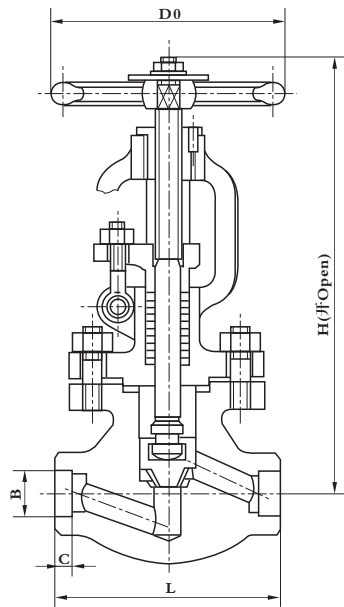
2、如进口端采用承插焊, 出口端采用螺纹, 则连接单元“S”项用“U”表示

Notes: 1. If using threaded connection, use "T" to express connection unit "S"

2. If inlet end adopt socket weld and outlet end adopts threaded connection, use "U" to express connection unit "S"



锻钢截止阀 Forged steel globe valve



应用规范 Application specifications

- 1、设计与制造按ANSI B16.34
  - 2、连接端  
承插口尺寸按ANSI B16.11
  - 3、阀门检查和试验按API STD.598
  - 4、主体材料: A105、F11、F22、304、316、304L、316L
- 
1. Design and manufacturing according to ANSI B16.34
  2. Connection end  
Socket dimension according to ANSI B16.11
  3. Valve inspection and test according to API STD.598
  4. Main body material: A105, F11, F22, 304, 316, 304L, 316L

尺寸和重量 Dimension & weight

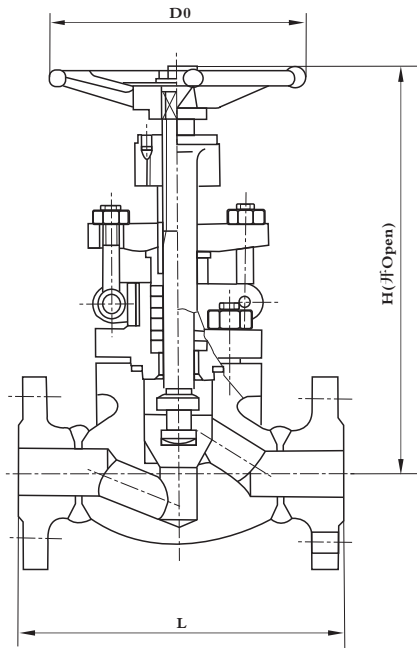
规格 Specification		900-1500Lb						2500Lb					
inch	mm	H	D0	L	B	C	W(Kg)	H	D0	L	B	C	W(Kg)
1/2	15	334	180	140	21.8	9.6	12.4	334	180	186	21.8	9.6	13.6
3/4	20	334	180	140	27.1	12.7	12.2	334	180	186	27.1	12.7	14.4
1	25	334	180	140	33.8	12.7	12.0	334	180	186	33.8	12.7	14.2
1 1/2	40	402	200	178	48.7	12.7	22.0	402	200	232	48.7	12.7	31.0
2	50	523	300	216	61.1	15.9	45.5	523	300	279	61.1	15.9	56.0

订货号 Ordering guide

主体材料 Main body material	压力级 Class (Lb)	内 件 代 号 Trim code						
		2	3	4	5	6	7	9
		STL/STL	Cr13/STL	Monel/Monel	18-8/STL	18-8/18-8	H.C./H.C.	304/304
A105	900	J9S2C	J9S3C	J9S4C				J9S9C
	1500	J15S2C	J15S3C	J15S4C				J15S9C
	2500	J25S2C	J25S3C	J25S4C				J25S9C
F11	900	J9S2H						
	1500	J15S2H						
	2500	J25S2H						
F22	900	J9S2V						
	1500	J15S2V						
	2500	J25S2V						
304	900	J9S2P			J9S5P	J9S6P	J9S7P	
	1500	J15S2P			J15S5P	J15S6P	J15S7P	
	2500	J25S2P			J25S5P	J25S6P	J25S7P	
316	900	J9S2R			J9S5R	J9S6R	J9S7R	
	1500	J15S2R			J15S5R	J15S6R	J15S7R	
	2500	J25S2R			J25S5R	J25S6R	J25S7R	
304L	900	J9S2S			J9S5S	J9S6S	J9S7S	
	1500	J15S2S			J15S5S	J15S6S	J15S7S	
	2500	J25S2S			J25S5S	J25S6S	J25S7S	
316L	900	J9S2L			J9S5L	J9S6L	J9S7L	
	1500	J15S2L			J15S5L	J15S6L	J15S7L	
	2500	J25S2L			J25S5L	J25S6L	J25S7L	



锻钢法兰截止阀 Forged steel flange globe valve



应用规范 Application specifications

- 1、设计与制造按 BS 5352
  - 2、连接端  
ANSI 150、300、600Lb按ANSI B16.5RF  
JIS 10K按JIS B2212、JIS 20K 按JIS B2214
  - 3、阀门检查和试验按API STD.598
  - 4、主体材料: A105、F11、F22、304、316、304L、316L、20#合金、Monel
1. Design and manufacturing according to BS 5352
  2. Connection end  
ANSI 150,300,600Lb according to ANSI B16.5RF  
JIS 10K according to JIS B2212 and JIS 20K according to JIS B2214
  3. Valve inspection and test according to API STD.598
  4. Main body material:A105,F11,F22,304,316,304L,316L,20# alloy,Monel

尺寸和重量 Dimension and weight

规格 Specification		150Lb 10K				300Lb 20K				600Lb			
inch	mm	L	H	D0	W(Kg)	L	H	D0	W(Kg)	L	H	D0	W(Kg)
1/2	15	108	163	100	5.7	152	163	100	6.1	165	163	100	7
3/4	20	117	163	100	8.1	178	163	100	8.8	190	163	100	9
1	25	127	201	125	11	203	201	125	12.5	216	201	125	14
1 1/2	40	165	246	160	21	229	246	160	23	241	246	160	25
2	50	203	283	180	34	267	283	180	37	292	283	180	41

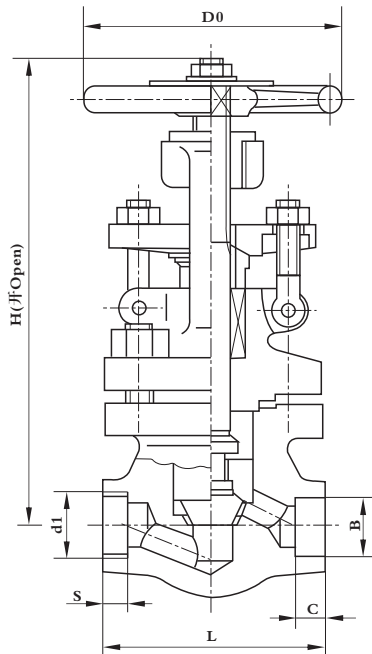


订货号 Ordering guide

主体材料 Body material	压力级 Pressure grade	内件代号 Trim code							
		2	3	4	5	6	7	8	9
		STL/STL	Cr13/STL	Monel/Monel	18-8/STL	18-8/18-8	H.C/H.C	20#/20#	304/304
A105	150Lb	J1F2C	J1F3C	J1F4C					J1F9C
	300Lb	J3F2C	J3F3C	J3F4C					J3F9C
	600Lb	J6F2C	J6F3C	J6F4C					J6F9C
	10K	J1KF2C	J1KF3C	J1KF4C					J1KF9C
	20K	J2KF2C	J2KF3C	J2KF4C					J2KF9C
F11	150Lb	J1F2H							
	300Lb	J3F2H							
	600Lb	J6F2H							
	10K	J1KF2H							
	20K	J2KF2H							
F22	150Lb	J1F2V							
	300Lb	J3F2V							
	600Lb	J6F2V							
	10K	J1KF2V							
	20K	J2KF2V							
304	150Lb	J1F2P			J1F5P	J1F6P	J1F7P		
	300Lb	J3F2P			J3F5P	J3F6P	J3F7P		
	600Lb	J6F2P			J6F5P	J6F6P	J6F7P		
	10K	J1KF2P			J1KF5P	J1KF6P	J1KF7P		
	20K	J2KF2P			J2KF5P	J2KF6P	J2KF7P		
316	150Lb	J1F2R			J1F5R	J1F6R	J1F7R		
	300Lb	J3F2R			J3F5R	J3F6R	J3F7R		
	600Lb	J6F2R			J6F5R	J6F6R	J6F7R		
	10K	J1KF2R			J1KF5R	J1KF6R	J1KF7R		
	20K	J2KF2R			J2KF5R	J2KF6R	J2KF7R		
304L	150Lb	J1F2S			J1F5S	J1F6S	J1F7S		
	300Lb	J3F2S			J3F5S	J3F6S	J3F7S		
	600Lb	J6F2S			J6F5S	J6F6S	J6F7S		
	10K	J1KF2S			J1KF5S	J1KF6S	J1KF7S		
	20K	J2KF2S			J2KF5S	J2KF6S	J2KF7S		
316L	150Lb	J1F2L			J1F5L	J1F6L	J1F7L		
	300Lb	J3F2L			J3F5L	J3F6L	J3F7L		
	600Lb	J6F2L			J6F5L	J6F6L	J6F7L		
	10K	J1KF2L			J1KF5L	J1KF6L	J1KF7L		
	20K	J2KF2L			J2KF5L	J2KF6L	J2KF7L		
20#	150Lb							J1F8N	
	300Lb							J3F8N	
	600Lb							J6F8N	
	10K							J1KF8N	
	20K							J2KF8N	
Monel	150Lb			J1F4M					
	300Lb			J3F4M					
	600Lb			J6F4M					
	10K			J1KF4M					
	20K			J2KF4M					



锻钢截止阀 ( 缩孔 ) Forged steel globe valve (Diameter reducing)



应用规范 Application specifications

- 1、设计与制造按 JPI-7S-36
  - 2、连接端  
承插口尺寸按 JIS B2306, ANSI B16.11  
螺纹端按 ANSI B2.1
  - 3、阀门检查和试验按 API STD.598
  - 4、主体材料: A105、F11、F22、304、316、304L、316L、20号合金、Monel
- 
1. Design and manufacturing according to JPI-7S-36
  2. Connection end  
Socket dimension according to JIS B2306, ANSI B16.11  
screw part according to ANSI B2.1
  3. Valve inspection and test according to API STD.598
  4. Main body material: A105, F11, F22, 304, 316, 304L, 316L, 20# alloy, Monel

尺寸和重量 Dimension & weight

mm

规格 Specification		JPI 600Lb							W(Kg)
mm	inch	H	D0	L	B	C	S	d1	
15	1/2	211	100	79	22.2	9.6	13.6	NPT1/2	3.9
20	3/4	218	100	92	27.7	12.7	13.9	NPT3/4	4.3
25	1	243	125	111	34.5	12.7	17.3	NPT1	6.3
40	1 1/2	290	160	152	49.1	12.7	18.4	NPT1 1/2	12.6

订货号 Ordering guide

主体材料 Main body material	内件代号 Trim code							
	2	3	4	5	6	7	8	9
	STL/STL	13Cr/STL	Monel/Monel	18-8/STL	18-8/18-8	H.C./H.C.	20#/20#	304/304
A105	J6S2C	J6S3C	J6S4C					J6S9C
F11	J6S2H							
F22	J6S2V							
304	J6S2P			J6S5P	J6S6P	J6S7P		
316	J6S2R			J6S5R	J6S6R	J6S7R		
304L	J6S2S			J6S5S	J6S6S	J6S7S		
316L	J6S2L			J6S5L	J6S6L	J6S7L		
20#								
Monel			J6S4M				J6S8N	

说明: 1. 如采用螺纹连接, 连接单元 "S" 项用 "T" 表示

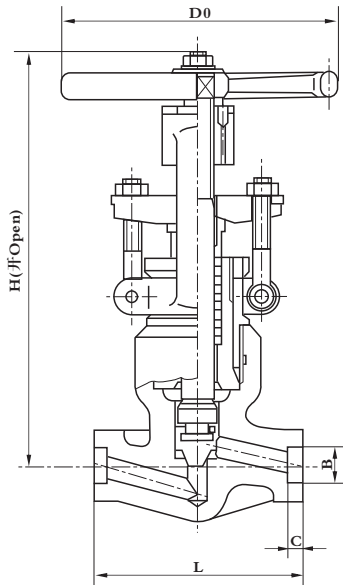
2. 如进口端采用承插焊, 出口端采用螺纹, 则连接单元 "S" 项用 "U" 表示

Notes: 1. If using threaded connection, use "T" to express connection unit "S"

2. If inlet end adopt socket weld and outlet end adopts threaded connection, use "U" to express connection unit "S"



压力自紧密封阀盖的锻钢截止阀 Pressure seat bonnet forged steel globe valve



应用规范 Application specifications

- 1、设计与制造按ANSI B16.34
  - 2、连接端  
承插口尺寸按ANSI B16.11
  - 3、阀门检查和试验按API STD.598
  - 4、主体材料: A105、F11、F22、304、316、304L、316L
- 
1. Design and manufacturing according to ANSI B16.34
  2. Connection end  
Socket dimension according to ANSI B16.11
  3. Valve inspection and test according to API STD.598
  4. Main body material:A105,F11,F22,304,316,304L,316L

尺寸和重量 Dimension & weight

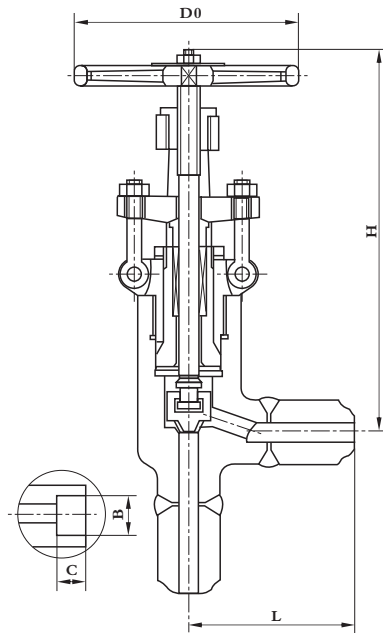
规格 Specification		900-1500Lb						2500Lb					
inch	mm	H	D0	L	B	C	W(Kg)	H	D0	L	B	C	W(Kg)
1/2	15	334	180	140	21.8	9.6	11.4	334	180	186	21.8	9.6	12.6
3/4	20	334	180	140	27.1	12.7	11.2	334	180	186	27.1	12.7	12.4
1	25	334	180	140	33.8	12.7	11.0	334	180	186	33.8	12.7	12.2
1 1/2	40	402	200	178	48.7	12.7	20.0	402	200	232	48.7	12.7	28.7
2	50	523	300	216	61.1	15.9	43.5	523	300	279	61.1	15.9	53.7

订货号 Ordering guide

主体材料 Main body material	压力级 Class (Lb)	内件代号 Trim code						
		2	3	4	5	6	7	9
		STL/STL	STL/Cr13	Monel/Monel	18-8/STL	18-8/18-8	H.C./H.C.	304/304
A105	900	JP9S2C	JP9S3C	JP9S4C				JP9S9C
	1500	JP15S2C	JP15S3C	JP15S4C				JP15S9C
	2500	JP25S2C	JP25S3C	JP25S4C				JP25S9C
F11	900	JP9S2 H						
	1500	JP15S2H						
	2500	JP25S2H						
F22	900	JP9S2V						
	1500	JP15S2V						
	2500	JP25S2V						
304	900	JP9S2P			JP9S5P	JP9S6P	JP9S7P	
	1500	JP15S2P			JP15S5P	JP15S6P	JP15S7P	
	2500	JP25S2P			JP25S5P	JP25S6P	JP25S7P	
316	900	JP9S2 R			JP9S5R	JP9S6R	JP9S7R	
	1500	JP15S2R			JP15S5R	JP15S6R	JP15S7R	
	2500	JP25S2R			JP25S5R	JP25S6R	JP25S7R	
304L	900	JP9S2S			JP9S5S	JP9S6S	JP9S7S	
	1500	JP15S2S			JP15S5S	JP15S6S	JP15S7S	
	2500	JP25S2S			JP25S5S	JP25S6S	JP25S7S	
316L	900	JP9S2L			JP9S5L	JP9S6L	JP9S7L	
	1500	JP15S2L			JP15S5L	JP15S6L	JP15S7L	
	2500	JP25S2L			JP25S5L	JP25S6L	JP25S7L	



压力自紧密封阀盖的角式锻钢截止阀 Pressure seat bonnet angle type forged steel globe valve



应用规范 Application specifications

- 1、设计与制造按ANSI B16.34
- 2、连接端  
对焊接端按ANSI B16.25  
承插口尺寸按ANSI B16.11
- 3、阀门检查和试验按API STD.598
- 4、主体材料: A105、F11、F22、304、316、304L、316L

1. Design and manufacturing according to ANSI B16.34
2. Connection  
Butt weld end according to ANSI B16.25  
Socket dimension according to ANSI B16.11
3. Valve inspection and test according to API STD.598
4. Main body material:A105,F11,F22,304,316,304L,316L

尺寸和重量 Dimension and weight

规格 Specification		900~1500Lb								2500Lb							
		H	D0	BW		SW				H	D0	BW		SW			
				L	W(Kg)	L	B	C	W(Kg)			L	W(Kg)	L	B	C	W(Kg)
inch	mm																
1/2	15	303	150	108	14.8	45	21.8	9.6	11.4	307	150	132	16.4	75	21.8	9.6	12.6
3/4	20	307	150	114	14.6	56	27.1	12.7	11.2	333	180	137	16.1	85	27.1	12.7	12.4
1	25	333	180	127	14.3	67	33.8	12.7	11	363	200	154	15.9	95	33.8	12.7	12.4
1 1/2	40	363	200	152	26	89	48.7	12.7	20	393	250	192	37.3	125	48.7	12.7	28.7
2	50	668	350	184	56.6	114.5	61.1	15.9	43.5	690	560	226	69.8	170	61.1	15.9	53.7

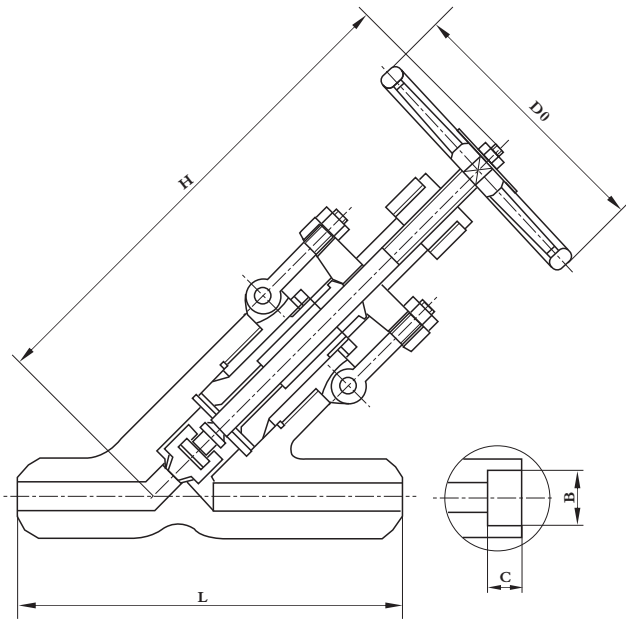


订货号 Ordering guide

主体材料 Main body material	压力级 Class (Lb)		内 件 材 料 Trim code						
			2	3	4	5	6	7	9
			STL/STL	STL/13Cr	Monel/Monel	18-8/STL	18-8/18-8	H.C./H.C.	304/304
A105	BW	900	JA9W2C	JA9W3C	JA9W4C				JA9W9C
		1500	JA15W2C	JA15W3C	JA15W4C				JA15W9C
		2500	JA25W2C	JA25W3C	JA25W4C				JA25W9C
	SW	900	JA9S2C	JA9S3C	JA9S4C				JA9S9C
		1500	JA15S2C	JA15S3C	JA15S4C				JA15S9C
		2500	JA25S2C	JA25S3C	JA25S4C				JA25S9C
F11	BW	900	JA9W2H						
		1500	JA15W2H						
		2500	JA25W2H						
	SW	900	JA9S2H						
		1500	JA15S2H						
		2500	JA25S2H						
F22	BW	900	JA9W2V						
		1500	JA15W2V						
		2500	JA25W2V						
	SW	900	JA9S2V						
		1500	JA15S2V						
		2500	JA25S2V						
304	BW	900	JA9W2P			JA9W5P	JA9W6P	JA9W7P	
		1500	JA15W2P			JA15W5P	JA15W6P	JA15W7P	
		2500	JA25W2P			JA25W5P	JA25W6P	JA25W7P	
	SW	900	JA9S2P			JA9S5P	JA9S6P	JA9S7P	
		1500	JA15S2P			JA15S5P	JA15S6P	JA15S7P	
		2500	JA25S2P			JA25S5P	JA25S6P	JA25S7P	
316	BW	900	JA9W2R			JA9W5R	JA9W6R	JA9W7R	
		1500	JA15W2R			JA15W5R	JA15W6R	JA15W7R	
		2500	JA25W2R			JA25W5R	JA25W6R	JA25W7R	
	SW	900	JA9S2R			JA9S5R	JA9S6R	JA9S7R	
		1500	JA15S2R			JA15S5R	JA15S6R	JA15S7R	
		2500	JA25S2R			JA25S5R	JA25S6R	JA25S7R	
304L	BW	900	JA9W2S			JA9W5S	JA9W6S	JA9W7S	
		1500	JA15W2S			JA15W5S	JA15W6S	JA15W7S	
		2500	JA25W2S			JA25W5S	JA25W6S	JA25W7S	
	SW	900	JA9S2S			JA9S5S	JA9S6S	JA9S7S	
		1500	JA15S2S			JA15S5S	JA15S6S	JA15S7S	
		2500	JA25S2S			JA25S5S	JA25S6S	JA25S7S	
316L	BW	900	JA9W2L			JA9W5L	JA9W6L	JA9W7L	
		1500	JA15W2L			JA15W5L	JA15W6L	JA15W7L	
		2500	JA25W2L			JA25W5L	JA25W6L	JA25W7L	
	SW	900	JA9S2L			JA9S5L	JA9S6L	JA9S7L	
		1500	JA15S2L			JA15S5L	JA15S6L	JA15S7L	
		2500	JA25S2L			JA25S5L	JA25S6L	JA25S7L	



压力自紧密封阀盖的Y型锻钢截止阀 Pressure seat bonnet Y-type forged steel globe valve



应用规范 Application specification

- 1、设计与制造按ANSI B16.34
  - 2、连接端  
对焊接端按ANSI B16.25  
承插口尺寸按ANSI B16.11
  - 3、阀门检查和试验按API STD.598
  - 4、主体材料: A105、F11、F22、304、316、304L、316L
- 
1. Design and manufacturing according to ANSI B16.34
  2. Connection end  
Butt weld end according to ANSI B16.25  
Socket dimension according to ANSI B16.11
  3. Valve inspection and test according to API STD.598
  4. Main body material:A105,F11,F22,304,316,304L,316L

尺寸和重量 Dimension and weight

规格 Specification		900~1500Lb								2500Lb							
		H	D0	BW		SW				H	D0	BW		SW			
				L	W(Kg)	L	B	C	W(Kg)			L	W(Kg)	L	B	C	W(Kg)
inch	mm																
1/2	15	303	150	216	14.8	150	21.8	9.6	11.4	307	150	264	16.4	150	21.8	9.6	12.6
3/4	20	307	150	229	14.6	170	27.1	12.7	11.2	333	180	273	16.1	170	27.1	12.7	12.4
1	25	333	180	254	14.3	190	33.8	12.7	11.0	363	200	308	15.9	190	33.8	12.7	12.2
1 1/2	40	363	200	305	26	250	48.7	12.7	20	393	250	384	37.3	250	48.7	12.7	28.7
2	50	668	350	368	56.6	340	61.1	15.9	43.5	690	560	451	69.8	340	61.1	15.9	53.7

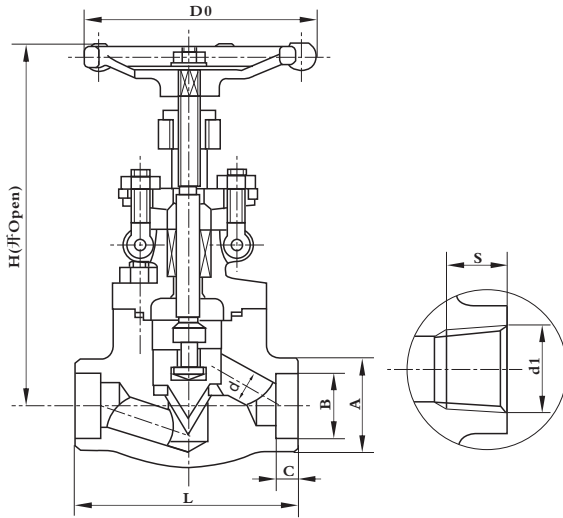


订货号 Ordering guide

主体材料 Main body material	压力级 Class (Lb)		内 件 材 料 Trim code						
			2	3	4	5	6	7	9
			STL/STL	STL/Cr13	Monel/Monel	18-8/STL	18-8/18-8	H.C./H.C.	304/304
A105	BW	900	JY9W2C	JY9W3C	JY9W4C				JY9W9C
		1500	JY15W2C	JY15W3C	JY15W4C				JY15W9C
		2500	JY25W2C	JY25W3C	JY25W4C				JY25W9C
	SW	900	JY9S2C	JY9S3C	JY9S4C				JY9S9C
		1500	JY15S2C	JY15S3C	JY15S4C				JY15S9C
		2500	JY25S2C	JY25S3C	JY25S4C				JY25S9C
F11	BW	900	JY9W2H						
		1500	JY15W2H						
		2500	JY25W2H						
	SW	900	JY9S2H						
		1500	JY15S2H						
		2500	JY25S2H						
F22	BW	900	JY9W2V						
		1500	JY15W2V						
		2500	JY25W2V						
	SW	900	JY9S2V						
		1500	JY15S2V						
		2500	JY25S2V						
304	BW	900	JY9W2P			JY9W5P	JY9W6P	JY9W7P	
		1500	JY15W2P			JY15W5P	JY15W6P	JY15W7P	
		2500	JY25W2P			JY25W5P	JY25W6P	JY25W7P	
	SW	900	JY9S2P			JY9S5P	JY9S6P	JY9S7P	
		1500	JY15S2P			JY15S5P	JY15S6P	JY15S7P	
		2500	JY25S2P			JY25S5P	JY25S6P	JY25S7P	
316	BW	900	JY9W2R			JY9W5R	JY9W6R	JY9W7R	
		1500	JY15W2R			JY15W5R	JY15W6R	JY15W7R	
		2500	JY25W2R			JY25W5R	JY25W6R	JY25W7R	
	SW	900	JY9S2R			JY9S5R	JY9S6R	JY9S7R	
		1500	JY15S2R			JY15S5R	JY15S6R	JY15S7R	
		2500	JY25S2R			JY25S5R	JY25S6R	JY25S7R	
304L	BW	900	JY9W2S			JY9W5S	JY9W6S	JY9W7S	
		1500	JY15W2S			JY15W5S	JY15W6S	JY15W7S	
		2500	JY25W2S			JY25W5S	JY25W6S	JY25W7S	
	SW	900	JY9S2S			JY9S5S	JY9S6S	JY9S7S	
		1500	JY15S2S			JY15S5S	JY15S6S	JY15S7S	
		2500	JY25S2S			JY25S5S	JY25S6S	JY25S7S	
316L	BW	900	JY9W2L			JY9W5L	JY9W6L	JY9W7L	
		1500	JY15W2L			JY15W5L	JY15W6L	JY15W7L	
		2500	JY25W2L			JY25W5L	JY25W6L	JY25W7L	
	SW	900	JY9S2L			JY9S5L	JY9S6L	JY9S7L	
		1500	JY15S2L			JY15S5L	JY15S6L	JY15S7L	
		2500	JY25S2L			JY25S5L	JY25S6L	JY25S7L	



锻钢针形阀 Forged steel needle valve



应用规范 Application specifications

- 1、设计与制造按BS 5352
  - 2、连接端  
承插口尺寸按ANSI B16.11  
螺纹按ANSI 1.20.1
  - 3、阀门检查和试验按API STD.598
  - 4、主体材料: A105、F11、F22、304、316、304L、316L、20#合金、Monel
1. Design and manufacturing according to BS 5352
  2. Connection end  
Socket dimension according to ANSI B16.11  
Screw part according to ANSI 1.20.1
  3. Valve inspection and test according to API STD.598
  4. Main body material:A105,F11,F22,304,316,304L,316L,20# Alloy,Monel

尺寸和重量 Dimension & weight

规格 Specification		150-800Lb									W(Kg)
inch	mm	H	D0	L	A	B	C	S	d		
1/2	15	163	100	79	33	21.8	9.6	13.6	NPT1/2	2.2	
3/4	20	163	100	92	40	27.1	12.7	13.9	NPT3/4	2.4	
1	25	201	125	111	47	33.8	12.7	17.3	NPT1	4.4	
1 1/2	40	216	160	152	66	48.7	12.7	18.4	NPT1 1/2	7.2	
2	50	283	180	171	79	61.1	15.9	19.2	NPT2	11.5	

订货号 Ordering guide

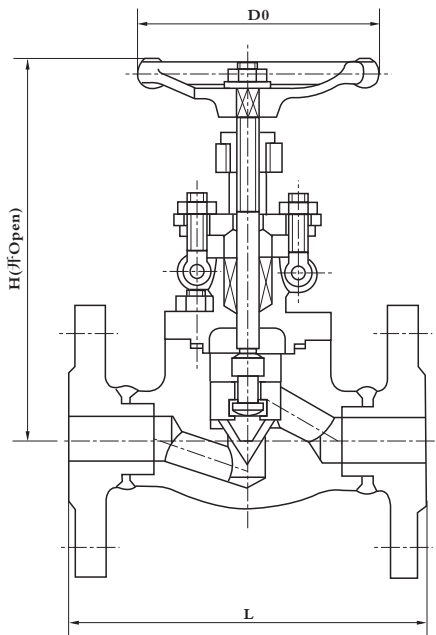
主体材料 Main body material	压力级 Class (Lb)	内 件 代 号 Trim code								
		2	3	4	5	6	7	8	9	
		STL/STL	13Cr/STL	Monel/Monel	18-8/STL	18-8/18-8	H.C./H.C.	20#/20#	304/304	
A105	150	JN1S2C	JN1S3C	JN1S4C					JN1S9C	
	300	JN3S2C	JN3S3C	JN3S4C					JN3S9C	
	600	JN6S2C	JN6S3C	JN6S4C					JN6S9C	
	800	JN8S2C	JN8S3C	JN8S4C					JN8S9C	
F11	150	JN1S2H								
	300	JN3S2H								
	600	JN6S2H								
	800	JN8S2H								
F22	150	JN1S2V								
	300	JN3S2V								
	600	JN6S2V								
	800	JN8S2V								
304	150	JN1S2P			JN1S5P	JN1S6P	JN1S7P			
	300	JN3S2P			JN3S5P	JN3S6P	JN3S7P			
	600	JN6S2P			JN6S5P	JN6S6P	JN6S7P			
	800	JN8S2P			JN8S5P	JN8S6P	JN8S7P			
316	150	JN1S2R			JN1S5R	JN1S6R	JN1S7R			
	300	JN3S2R			JN3S5R	JN3S6R	JN3S7R			
	600	JN6S2R			JN6S5R	JN6S6R	JN6S7R			
	800	JN8S2R			JN8S5R	JN8S6R	JN8S7R			
304L	150	JN1S2S			JN1S5S	JN1S6S	JN1S7S			
	300	JN3S2S			JN3S5S	JN3S6S	JN3S7S			
	600	JN6S2S			JN6S5S	JN6S6S	JN6S7S			
	800	JN8S2S			JN8S5S	JN8S6S	JN8S7S			
316L	150	JN1S2L			JN1S5L	JN1S6L	JN1S7L			
	300	JN3S2L			JN3S5L	JN3S6L	JN3S7L			
	600	JN6S2L			JN6S5L	JN6S6L	JN6S7L			
	800	JN8S2L			JN8S5L	JN8S6L	JN8S7L			
20#/20#	150							JN1S8N		
	300							JN3S8N		
	600							JN6S8N		
	800							JN8S8N		
Monel	150			JN1S4M						
	300			JN3S4M						
	600			JN6S4M						
	800			JN8S4M						

说明: 如采用螺纹连接, 连接单元 "S" 项用 "T" 表示

Notes: If using threaded connection, use "T" to express connection unit "S"



锻钢法兰针形阀 Forged steel flange needle valve



应用规范 Application specifications

- 1、设计与制造按BS 5352
  - 2、法兰  
ANSI 150、300、600Lb按ANSI B16.5RF  
JIS 10K按JIS B2212、JIS 20K按 JIS B2214
  - 3、阀门检查和试验按API STD.598
  - 4、主体材料: A105、F11、F22、304、316、304L、316L、20#合金、Monel
1. Design and manufacturing according to BS 5352
  2. Flange  
ANSI 150、300、600Lb according to ANSI B16.5RF JIS 10K according to JIS B2212、JIS 20K according to JIS B2214
  3. Valve inspection and test according to API STD.598
  4. Main body material:A105,F11,F22,304,316,304L,316L,20# Alloy,Monel

尺寸和重量 Dimension & weight

mm

规格 Specification		150Lb 10K				300Lb 20K				600Lb			
inch	mm	L	H	D0	W(Kg)	L	H	D0	W(Kg)	L	H	D0	W(Kg)
1/2	15	108	163	100	5.7	152	163	100	6.1	165	163	100	7
3/4	20	117	163	100	8.1	178	163	100	8.8	190	163	100	9
1	25	127	201	125	11	203	201	125	12.5	216	201	125	14
1 1/2	40	165	246	160	21	229	246	160	23	241	246	160	25
2	50	203	283	180	34	267	283	180	37	292	283	180	41



订货号 Ordering guide

主体材料 Body material	压力级 Pressure grade	内件代号 Trim code							
		2	3	4	5	6	7	8	9
		STL/STL	Cr13/STL	Monel/Monel	18-8/STL	18-8/18-8	H.C/H.C	20#/20#	304/304
A105	150Lb	JN1F2C	JN1F3C	JN1F4C					JN1F9C
	300Lb	JN3F2C	JN3F3C	JN3F4C					JN3F9C
	600Lb	JN6F2C	JN6F3C	JN6F4C					JN6F9C
	10K	JN1KF2C	JN1KF3C	JN1KF4C					JN1KF9C
	20K	JN2KF2C	JN2KF3C	JN2KF4C					JN2KF9C
F11	150Lb	JN1F2H							
	300Lb	JN3F2H							
	600Lb	JN6F2H							
	10K	JN1KF2H							
	20K	JN2KF2H							
F22	150Lb	JN1F2V							
	300Lb	JN3F2V							
	600Lb	JN6F2V							
	10K	JN1KF2V							
	20K	JN2KF2V							
304	150Lb	JN1F2P			JN1F5P	JN1F6P	JN1F7P		
	300Lb	JN3F2P			JN3F5P	JN3F6P	JN3F7P		
	600Lb	JN6F2P			JN6F5P	JN6F6P	JN6F7P		
	10K	JN1KF2P			JN1KF5P	JN1KF6P	JN1KF7P		
	20K	JN2KF2P			JN2KF5P	JN2KF6P	JN2KF7P		
316	150Lb	JN1F2R			JN1F5R	JN1F6R	JN1F7R		
	300Lb	JN3F2R			JN3F5R	JN3F6R	JN3F7R		
	600Lb	JN6F2R			JN6F5R	JN6F6R	JN6F7R		
	10K	JN1KF2R			JN1KF5R	JN1KF6R	JN1KF7R		
	20K	JN2KF2R			JN2KF5R	JN2KF6R	JN2KF7R		
304L	150Lb	JN1F2S			JN1F5S	JN1F6S	JN1F7S		
	300Lb	JN3F2S			JN3F5S	JN3F6S	JN3F7S		
	600Lb	JN6F2S			JN6F5S	JN6F6S	JN6F7S		
	10K	JN1KF2S			JN1KF5S	JN1KF6S	JN1KF7S		
	20K	JN2KF2S			JN2KF5S	JN2KF6S	JN2KF7S		
316L	150Lb	JN1F2L			JN1F5L	JN1F6L	JN1F7L		
	300Lb	JN3F2L			JN3F5L	JN3F6L	JN3F7L		
	600Lb	JN6F2L			JN6F5L	JN6F6L	JN6F7L		
	10K	JN1KF2L			JN1KF5L	JN1KF6L	JN1KF7L		
	20K	JN2KF2L			JN2KF5L	JN2KF6L	JN2KF7L		
20#	150Lb							JN1F8N	
	300Lb							JN3F8N	
	600Lb							JN6F8N	
	10K							JN1KF8N	
	20K							JN2KF8N	
Monel	150Lb			JN1F4M					
	300Lb			JN3F4M					
	600Lb			JN6F4M					
	10K			JN1KF4M					
	20K			JN2KF4M					